

Watsonia Heights Primary School (4935)

2008 School Level Report

Please check the data in this report. If, after comparing it with your own records, you deem it to be incorrect or incomplete, follow the directions on the following website:

- <http://www.education.vic.gov.au/management/schoolimprovement/performance/performancedata/>
then select 'School Performance Reports'.
-
-

Contents

	Page No.
Privacy	3
SFO Density and LBOTE	4
Assessment of Reading Prep to Year 2	5-6
Teacher Judgments against the VELs	7-15
NAPLAN - Reading	16
- Writing	17
- Numeracy	18
AIM - Reading	19
- Mathematics	20
Teacher Assessment of Student Progress (PSD students)	21-22
Enrolment	23
Student Absence	24
Opinion Surveys - Parent	25
- Staff	26
Performance & Development Culture	27
Staff Sick Leave	28
Teaching Staff Retention	29
Bank Balances	30

Privacy

When reporting on the school's performance to the school community, care must be taken to avoid the disclosure of information that can directly or indirectly identify an individual. This may be a particular issue when reporting on the achievement of specific cohorts of students or the opinions of staff where there are small numbers.

In situations where privacy cannot be assured, schools may wish to report on the mean result or provide a written comment on school, year level or cohort performance.

Where the School Level Report is provided to school council members as part of any annual reporting process, or used for discussion on a school's performance, such as in consultation with the school community in the school self-evaluation process, it is important to remind school community members of their duty to only use this information for the purpose it was provided, and that the material must be kept confidential.

It is important to note that information that identifies an individual or can be used with other readily available information to identify a person is now protected by the *Information Privacy Act 2000* (<http://www.education.vic.gov.au/about/deptpolicies/informationprivacy.htm>).

SFO Density and LBOTE

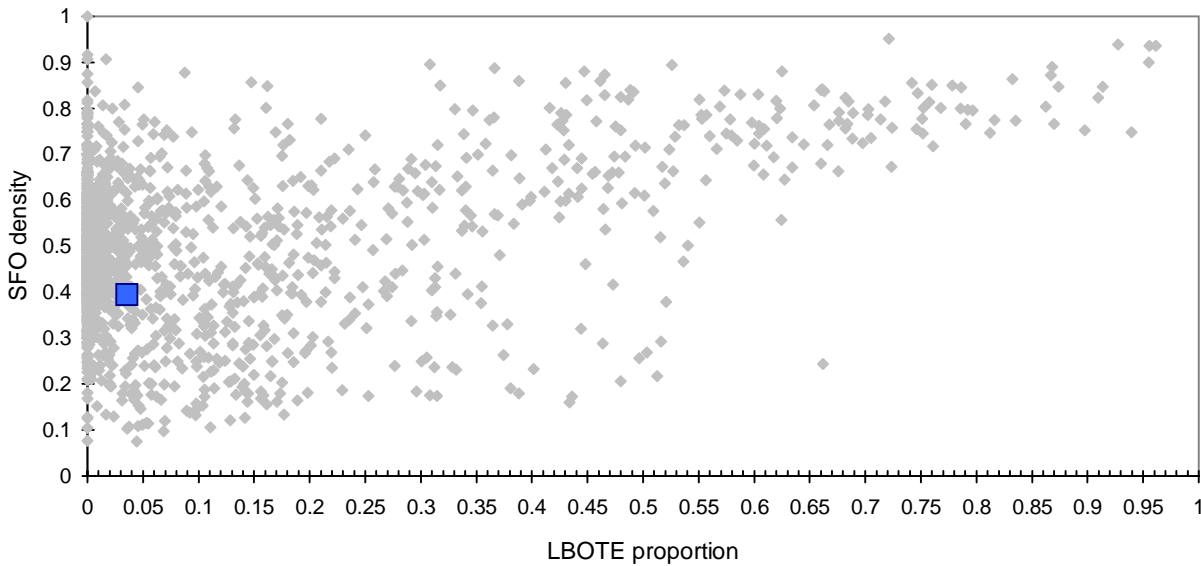
School no: 4935

School name: Watsonia Heights Primary School

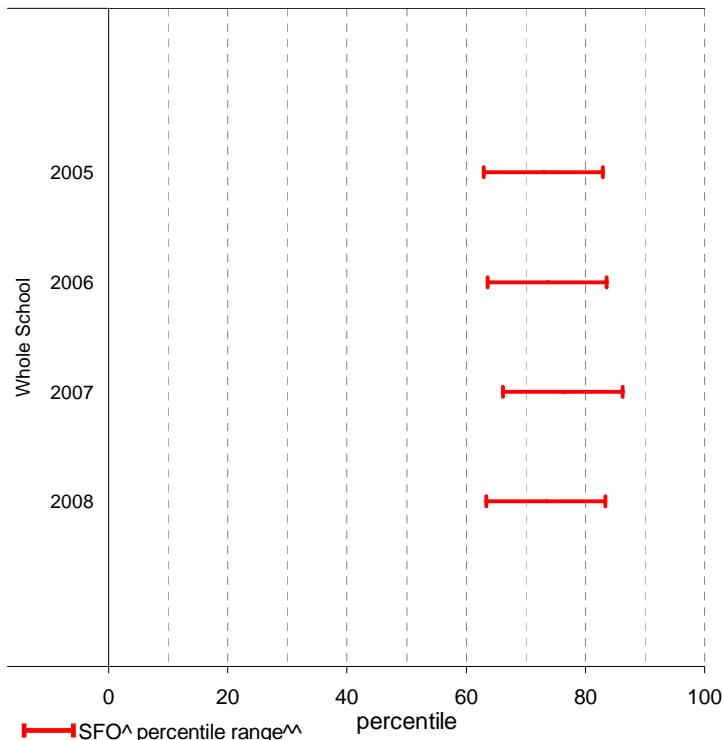
Explanation: The chart below plots the school's 2008 SFO (Student Family Occupation) density[^] and LBOTE (Language Background Other Than English) proportion* against that of all government schools. This school is highlighted as a square on the chart.

	2001	2002	2003	2004	2005	2006	2007	2008
SFO density [^] :					0.39	0.37	0.37	0.39
LBOTE proportion*:	0.05	0.06	0.06	0.04	0.05	0.05	0.04	0.04

School's 2008 SFO density and LBOTE proportion against that of all government schools



School's SFO[^] percentile range^{^^} over time



Notes: [^] The higher the SFO density, the lower the SFO percentile and the lower the socio-economic status (SES).
^{^^} The school's SFO percentile range shows the 20% of schools with an SFO Density most like this school.
 * From 2007, a student is LBOTE if either the student or one parent/guardian speaks a language other than English at home. Prior to 2007, a student is LBOTE if the student or one of the parents was born in a non-English speaking country.

Assessment of Reading: Prep to Year 2

School no: 4935

School name: Watsonia Heights Primary School

Explanation: Students' ability to read unsighted text is assessed at the end of each year. The data presented here includes 'deemed not capable' students.

More detailed information (including data where deemed not capable students are excluded) is available in the Assessment of Reading report, available from the School Performance Reports website.

Source of data: Data transmitted from school to DEECD via an online web-form.

	Prep										Year 1										Year 2														
	School									State	School									State	School									State					
	2004		2005		2006		2007		2008		2008	2004		2005		2006		2007		2008		2008	2004		2005		2006		2007		2008		2008		
	(No.)	%	(No.)	%	(No.)	%	(No.)	%	(No.)	%	%	(No.)	%	(No.)	%	(No.)	%	(No.)	%	(No.)	%	%	(No.)	%	(No.)	%	(No.)	%	(No.)	%	%				
Level 1																																			
100%	(29)	65.9	(21)	58.3	(13)	41.9	(11)	34.4	(16)	50.0	69.0	(31)	96.9	(42)	100.0	(36)	97.3	(32)	97.0	(22)	84.6	94.7													
90-99%	(14)	31.8	(13)	36.1	(17)	54.8	(18)	56.2	(16)	50.0	25.4					(1)	2.7	(1)	3.0	(4)	15.4	4.7													
80-89%	(1)	2.3	(1)	2.8	(1)	3.2	(2)	6.2			2.3										0.2														
51-79%											1.5											0.2													
50% or below			(1)	2.8			(1)	3.1			1.7	(1)	3.1								0.3														
Total	(44)	100.0	(36)	100.0	(31)	100.0	(32)	100.0	(32)	100.0	100.0	(32)	100.0	(42)	100.0	(37)	100.0	(33)	100.0	(26)	100.0	100.0													
Subtotal 90-100%	(43)	97.7	(34)	94.4	(30)	96.8	(29)	90.6	(32)	100.0	94.5	(31)	96.9	(42)	100.0	(37)	100.0	(33)	100.0	(26)	100.0	99.4													
Level 5																																			
100%	(14)	31.8	(18)	50.0	(9)	29.0	(7)	21.9	(12)	37.5	45.3	(30)	93.8	(39)	92.9	(30)	81.1	(32)	97.0	(24)	92.3	81.0	(32)	100.0	(34)	100.0	(39)	97.5	(37)	97.4	(30)	100.0	90.4		
90-99%	(25)	56.8	(12)	33.3	(19)	61.3	(11)	34.4	(14)	43.8	36.1	(1)	3.1	(3)	7.1	(7)	18.9			(2)	7.7	16.9				(1)	2.5	(1)	2.6			8.8			
80-89%	(2)	4.5	(1)	2.8			(5)	15.6	(1)	3.1	5.2												0.8												
51-79%					(2)	6.5	(7)	21.9	(2)	6.3	3.6												0.4												
50% or below	(3)	6.8	(5)	13.9	(1)	3.2	(2)	6.2	(3)	9.4	9.8	(1)	3.1			(1)	3.0					1.0													
Total	(44)	100.0	(36)	100.0	(31)	100.0	(32)	100.0	(32)	100.0	100.0	(32)	100.0	(42)	100.0	(37)	100.0	(33)	100.0	(26)	100.0	100.0	(32)	100.0	(34)	100.0	(40)	100.0	(38)	100.0	(30)	100.0	100.0		
Subtotal 90-100%	(39)	88.6	(30)	83.3	(28)	90.3	(18)	56.2	(26)	81.3	81.3	(31)	96.9	(42)	100.0	(37)	100.0	(32)	97.0	(26)	100.0	97.9	(32)	100.0	(34)	100.0	(40)	100.0	(38)	100.0	(30)	100.0	99.2		
Level 15																																			
100%											(19)	59.4	(23)	54.8	(16)	43.2	(17)	51.5	(7)	26.9				37.1	(32)	100.0	(27)	79.4	(34)	85.0	(29)	76.3	(27)	90.0	62.9
90-99%											(11)	34.4	(17)	40.5	(15)	40.5	(15)	45.5	(14)	53.8				49.2			(6)	17.6	(6)	15.0	(8)	21.1	(2)	6.7	33.2
80-89%											(1)	3.1	(2)	4.8	(2)	5.4			(4)	15.4			6.3												
51-79%															(2)	5.4							3.0												
50% or below											(1)	3.1			(2)	5.4	(1)	3.0	(1)	3.8			4.3			(1)	2.9		(1)	2.6	(1)	3.3	1.4		
Total											(32)	100.0	(42)	100.0	(37)	100.0	(33)	100.0	(26)	100.0			100.0	(32)	100.0	(34)	100.0	(40)	100.0	(38)	100.0	(30)	100.0	100.0	
Subtotal 90-100%											(30)	93.8	(40)	95.2	(31)	83.8	(32)	97.0	(21)	80.8				86.4	(32)	100.0	(33)	97.1	(40)	100.0	(37)	97.4	(29)	96.7	96.1
Level 20																																			
100%																																			
90-99%																																			
80-89%																																			
51-79%																																			
50% or below																																			
Total																																			
Subtotal 90-100%																																			

	2004	2005	2006	2007	2008	2004	2005	2006	2007	2008	2004	2005	2006	2007	2008
No. of students DNC ¹ :	1	1	0	0	0	1	0	0	0	0	0	1	0	0	0
No. of students at risk ² :	1	2	1	3	0	1	0	0	1	0	0	1	0	1	

Notes:
¹ Students can be DNC (deemed not capable) only if they meet one of the conditions (insufficient English, receiving D&I funding, insufficient attendance at the school or referred from Reading Recovery) AND read below the minimum standard.
² The number of students at risk is the number of students reading at less than 90% accuracy at Level 1 for Prep, Level 5 for Year 1 or Level 15 for Year 2.

Assessment of Reading: Prep to Year 2

School no: 4935

School name: Watsonia Heights Primary School

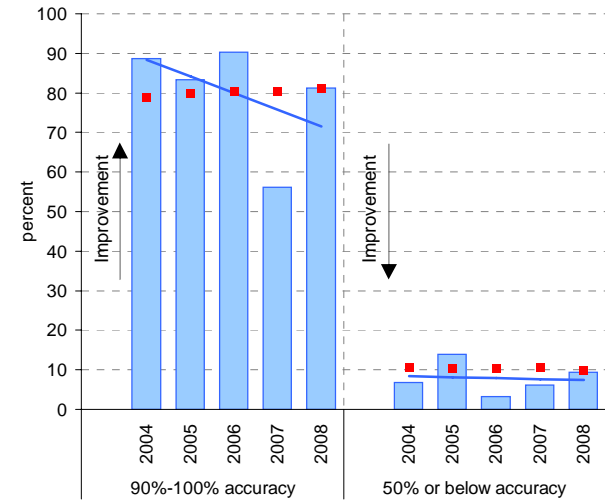
Explanation: Students' ability to read unsighted text is assessed at the end of each year.

Source of data: Data transmitted from school to DEECD via an online web-form.

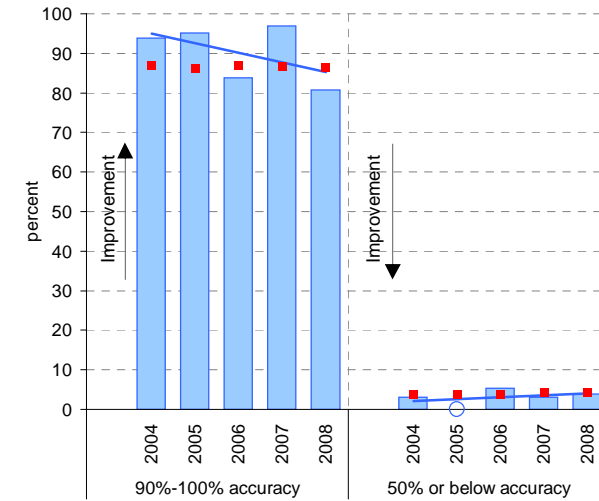
Notes: * The school trendline is being trialled. It is only plotted when there is data for each calendar year.

^ This data is highly skewed, with a lot of schools obtaining the best possible result, particularly in Year 2. The maximum achievable percentile is therefore significantly less than 100.

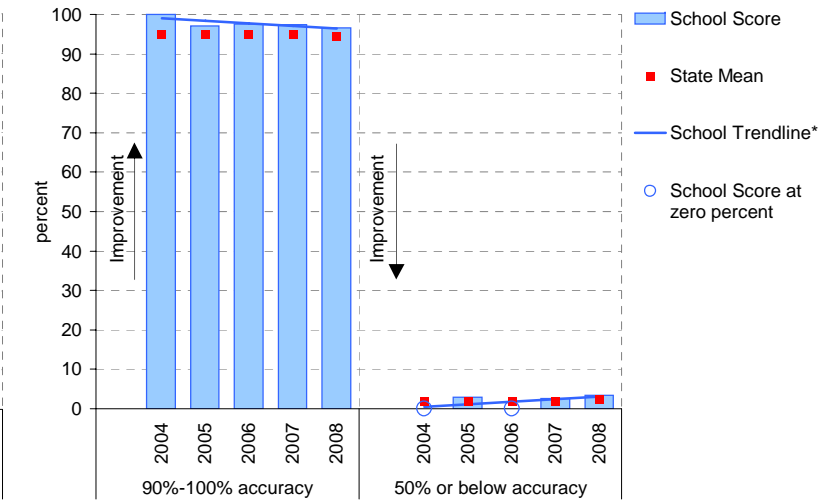
Year level: Prep
Text level: Level 5



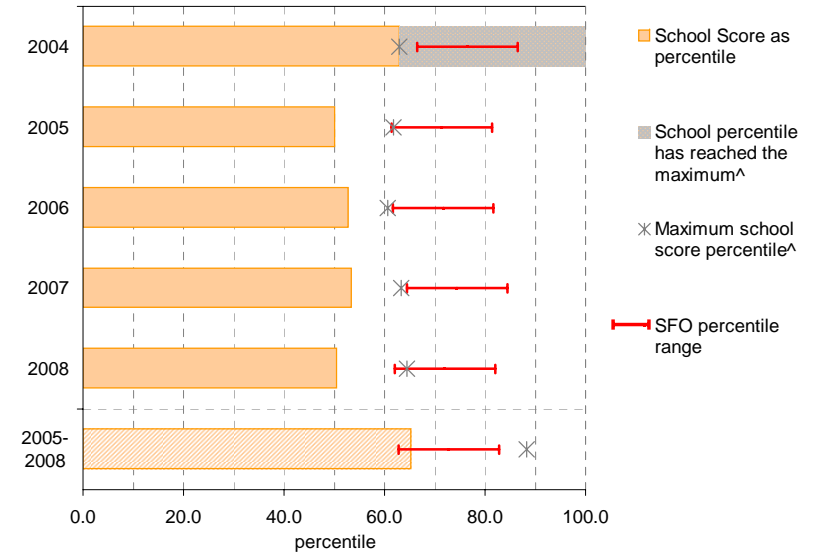
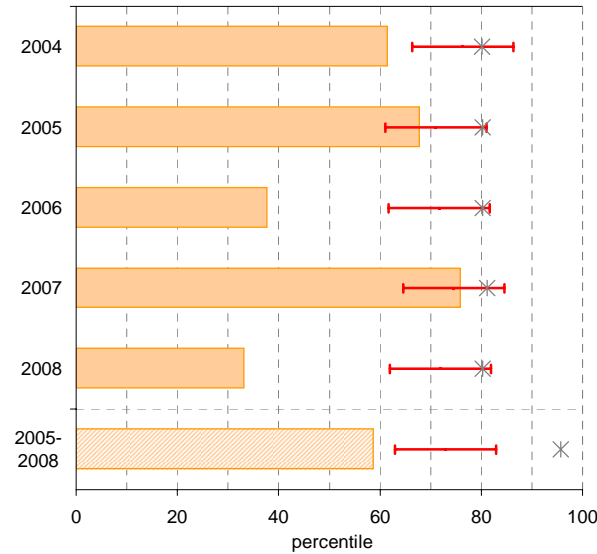
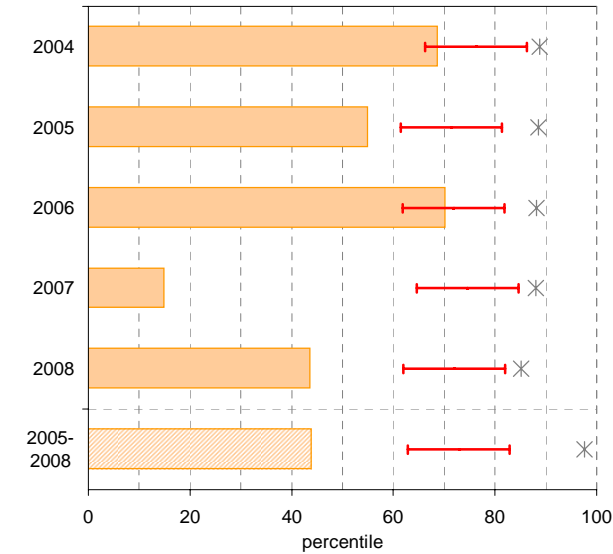
Year level: Year 1
Text level: Level 15



Year level: Year 2
Text level: Level 20



90%-100% accuracy as percentile against SFO percentile range



Teacher Judgments against the VELS - Year levels Prep-6 combined

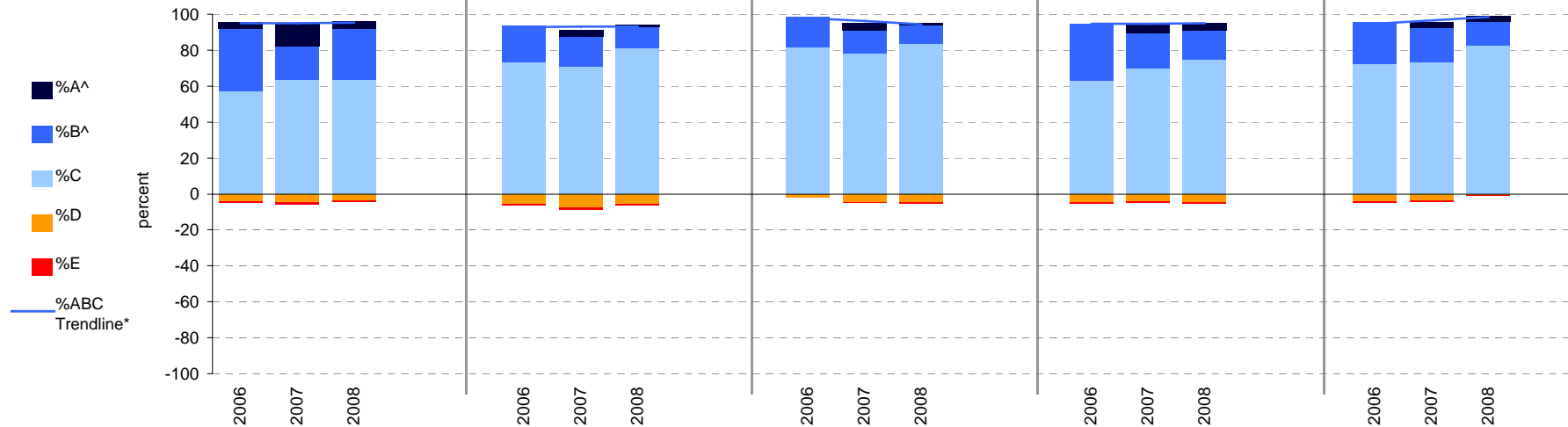
School no: 4935

School name: Watsonia Heights Primary School

Source of data: Data retrieved electronically from CASES21.

Explanation: Teacher judgments of student achievement against the VELS.

Year Levels:		Reading						Writing					Speaking & Listening					Number					Measurement, Chance & Data								
		total students	% A^	% B^	% C	% D	% E	total students	% A^	% B^	% C	% D	% E	total students	% A^	% B^	% C	% D	% E	total students	% A^	% B^	% C	% D	% E	total students	% A^	% B^	% C	% D	% E
Prep-6	2006	234	3	35	57	4	0	234	0	20	74	6	1	234	0	17	82	2	0	233	0	31	63	5	1	233	0	23	72	4	0
(combined)	2007	243	12	19	64	5	1	243	4	17	71	7	1	243	4	13	78	5	0	243	5	20	70	4	1	243	3	19	73	4	1
	2008	218	4	29	63	4	0	218	1	12	81	6	0	218	1	11	83	5	0	218	4	17	75	5	0	218	3	13	83	0	0



Notes: * The school trendline is only plotted when there is data for each calendar year.
 ^ The cutoff between grades A and B changed in 2007. Further information is available on the following website:
<http://www.education.vic.gov.au/studentlearning/studentreports/schools/whatsnew.htm>.

Teacher Judgments against the VELS - English (primary)

School no: 4935

School name: Watsonia Heights Primary School

Source of data: Data retrieved electronically from CASES21.

Explanation: Teacher judgments of student achievement against the VELS.

Notes: * The school trendline is only plotted when there is data for each calendar year.

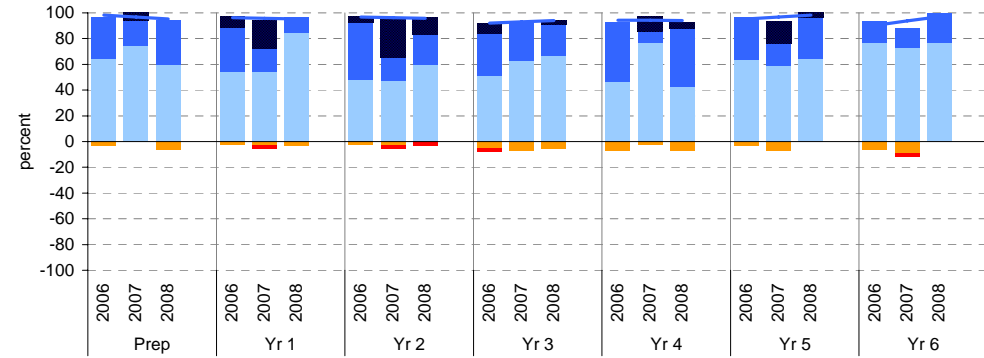
** In 2006, approx. 850 schools assessed their students against the 0.25 VELS scale. 2006 benchmarks are therefore based on a subset of schools.

^ The cutoff between grades A and B changed in 2007. Further information is available on the following website: <http://www.education.vic.gov.au/studentlearning/studentreports/schools/whatsnew.htm>.

^^ 2008 benchmarks and percentiles will be calculated in August, when data from all schools has been submitted.

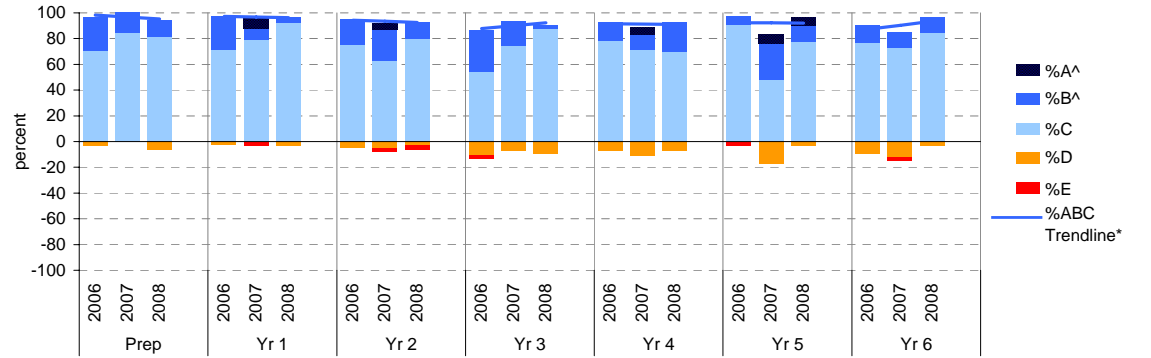
Reading

	total students	% of students by grade					Mean Score			total students	% of students by grade					Mean Score			
		A^	B^	C	D	E	School	State**			A^	B^	C	D	E	School	State**		
Prep	2006	31	0	32	65	3	0	1.10	1.01	Yr 4	2006	28	0	46	46	7	0	3.01	2.96
	2007	32	6	19	75	0	0	1.00	1.01		2007	35	11	9	77	3	0	3.01	2.97
	2008	32	0	34	59	6	0	0.96			2008	40	5	45	43	8	0	3.05	
Yr 1	2006	35	9	34	54	3	0	1.61	1.57	Yr 5	2006	33	0	33	64	3	0	3.58	3.44
	2007	33	21	18	55	3	3	1.61	1.57		2007	29	17	17	59	7	0	3.55	3.45
	2008	26	0	12	85	4	0	1.46			2008	31	3	32	65	0	0	3.53	
Yr 2	2006	40	5	45	48	3	0	2.14	2.04	Yr 6	2006	30	0	17	77	7	0	3.97	3.94
	2007	38	29	18	47	3	3	2.11	2.06		2007	33	0	15	73	9	3	3.90	3.95
	2008	30	13	23	60	0	3	2.05			2008	26	0	23	77	0	0	4.00	
Yr 3	2006	37	8	32	51	5	3	2.53	2.49										
	2007	43	0	30	63	7	0	2.52	2.50										
	2008	33	3	24	67	6	0	2.49											



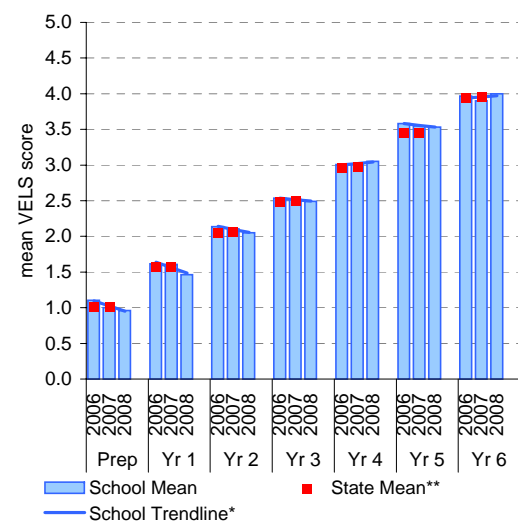
Writing

	total students	% of students by grade					Mean Score			total students	% of students by grade					Mean Score			
		A^	B^	C	D	E	School	State**			A^	B^	C	D	E	School	State**		
Prep	2006	31	0	26	71	3	0	0.98	0.97	Yr 4	2006	28	0	14	79	7	0	2.88	2.89
	2007	32	0	16	84	0	0	0.88	0.97		2007	35	6	11	71	11	0	2.94	2.91
	2008	32	0	13	81	6	0	0.88			2008	40	0	23	70	8	0	2.96	
Yr 1	2006	35	0	26	71	3	0	1.50	1.47	Yr 5	2006	33	0	6	91	0	3	3.46	3.38
	2007	33	9	9	79	0	3	1.48	1.49		2007	29	7	28	48	17	0	3.47	3.39
	2008	26	0	4	92	4	0	1.42			2008	31	6	13	77	3	0	3.47	
Yr 2	2006	40	0	20	75	5	0	1.98	1.95	Yr 6	2006	30	0	13	77	10	0	3.96	3.88
	2007	38	5	24	63	5	3	1.97	1.96		2007	33	0	12	73	12	3	3.88	3.89
	2008	30	0	13	80	3	3	1.92			2008	26	0	12	85	4	0	3.95	
Yr 3	2006	37	0	32	54	11	3	2.42	2.42										
	2007	43	0	19	74	7	0	2.49	2.43										
	2008	33	0	3	88	9	0	2.38											

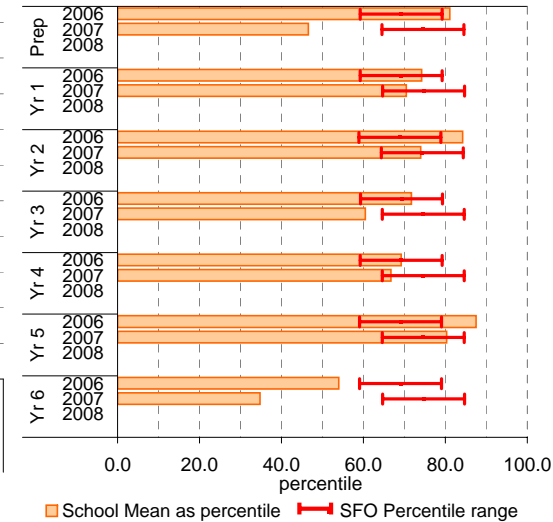


Reading

School Mean against State Mean^^

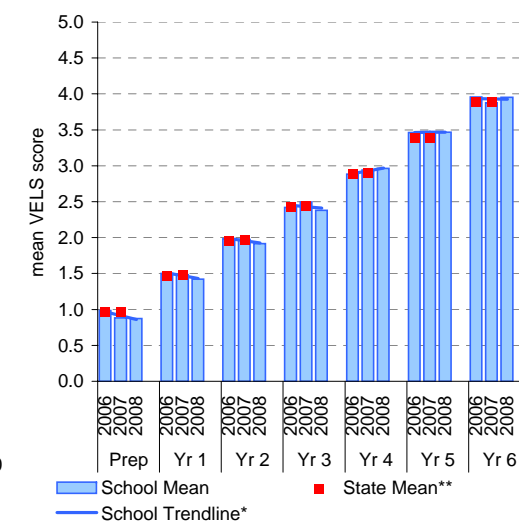


School Mean as percentile against SFO percentile range^^

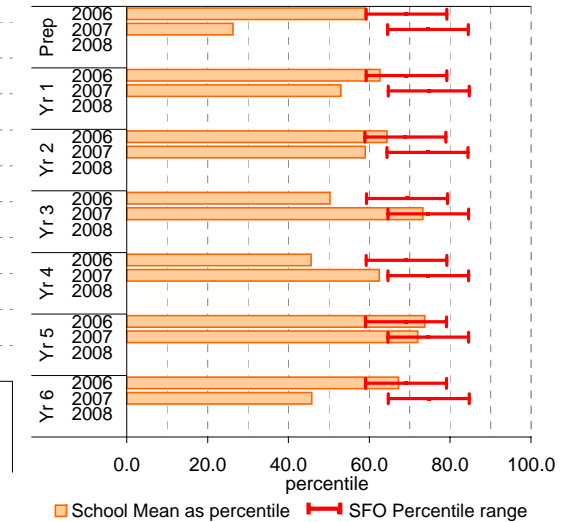


Writing

School Mean against State Mean^^



School Mean as percentile against SFO percentile range^^



Teacher Judgments against the VELS - English (primary)

School no: 4935

School name: Watsonia Heights Primary School

Source of data: Data retrieved electronically from CASES21.

Explanation: Teacher judgments of student achievement against the VELS.

Notes: * The school trendline is only plotted when there is data for each calendar year.

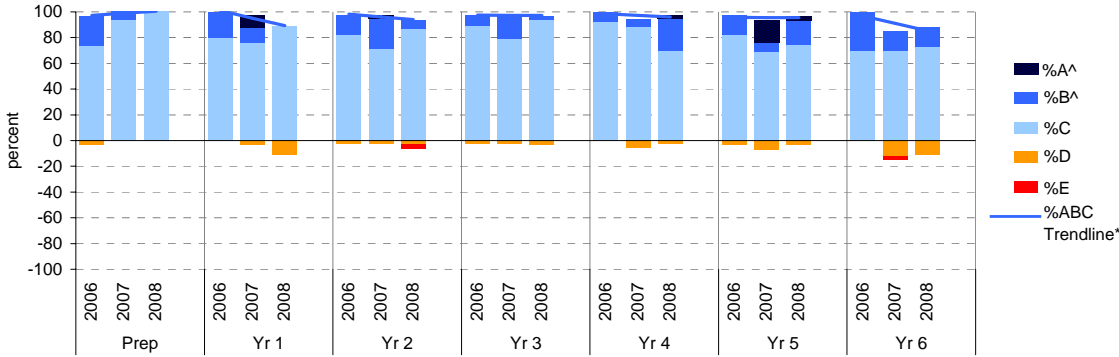
** In 2006, approx. 850 schools assessed their students against the 0.25 VELS scale. 2006 benchmarks are therefore based on a subset of schools.

^ The cutoff between grades A and B changed in 2007. Further information is available on the following website: <http://www.education.vic.gov.au/studentlearning/studentreports/schools/whatsnew.htm>.

^^ 2008 benchmarks and percentiles will be calculated in August, when data from all schools has been submitted.

Speaking and Listening

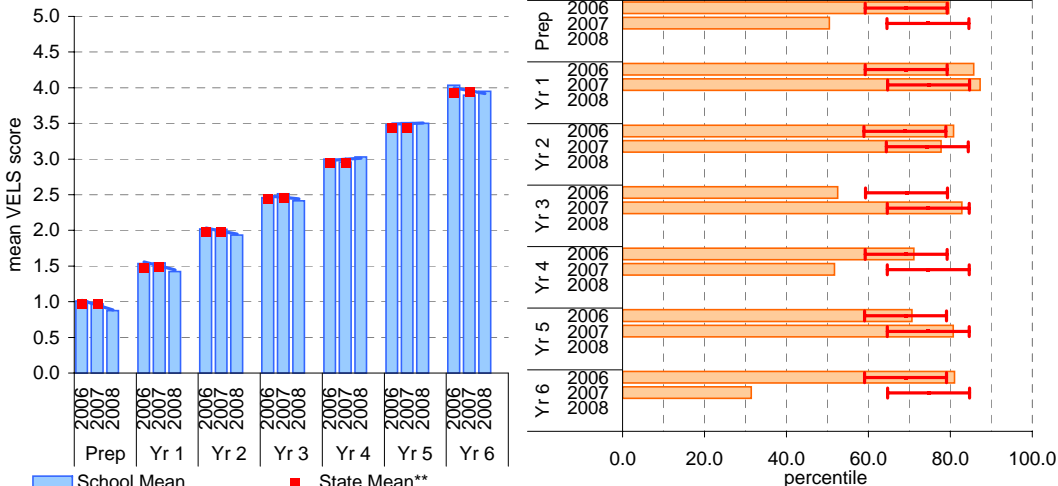
	total students	% of students by grade					Mean Score			total students	% of students by grade					Mean Score			
		A^	B^	C	D	E	School	State**			A^	B^	C	D	E	School	State**		
Prep	2006	31	0	23	74	3	0	1.01	0.97	Yr 4	2006	28	0	7	93	0	0	3.00	2.94
	2007	32	0	6	94	0	0	0.97	0.97		2007	35	0	6	89	6	0	2.96	2.94
	2008	32	0	0	100	0	0	0.88			2008	40	3	25	70	3	0	3.03	
Yr 1	2006	35	0	20	80	0	0	1.54	1.48	Yr 5	2006	33	0	15	82	3	0	3.48	3.43
	2007	33	9	12	76	3	0	1.55	1.48		2007	29	17	7	69	7	0	3.51	3.43
	2008	26	0	0	88	12	0	1.42			2008	31	3	19	74	3	0	3.50	
Yr 2	2006	40	0	15	83	3	0	2.02	1.98	Yr 6	2006	30	0	30	70	0	0	4.03	3.93
	2007	38	3	24	71	3	0	2.01	1.98		2007	33	0	15	70	12	3	3.89	3.94
	2008	30	0	7	87	3	3	1.93			2008	26	0	15	73	12	0	3.95	
Yr 3	2006	37	0	8	89	3	0	2.46	2.45										
	2007	43	0	19	79	2	0	2.51	2.46										
	2008	33	0	3	94	3	0	2.42											



Speaking and Listening

School Mean against State Mean^^

School Mean as percentile against SFO percentile range^^



Legend: School Mean (blue bar), State Mean** (red bar), School Trendline* (blue line), School Mean as percentile (orange bar), SFO Percentile range (red error bar)

Teacher Judgments against the VELS - Mathematics (primary)

School no: 4935

School name: Watsonia Heights Primary School

Source of data: Data retrieved electronically from CASES21.

Explanation: Teacher judgments of student achievement against the VELS.

Notes: * The school trendline is only plotted when there is data for each calendar year.

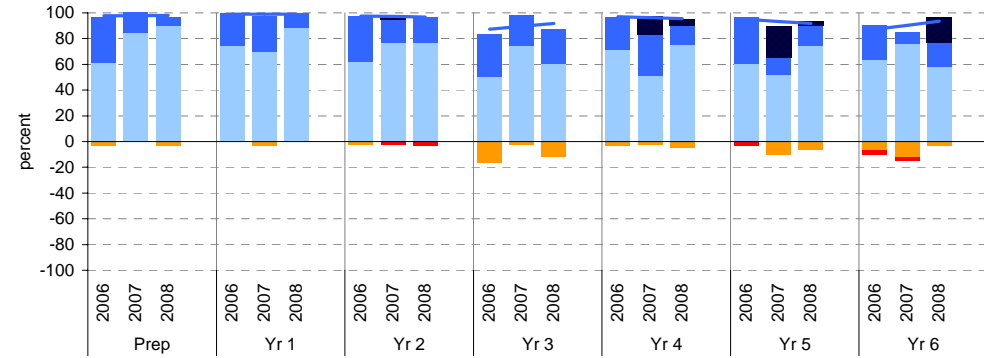
** In 2006, approx. 850 schools assessed their students against the 0.25 VELS scale. 2006 benchmarks are therefore based on a subset of schools.

^ The cutoff between grades A and B changed in 2007. Further information is available on the following website: <http://www.education.vic.gov.au/studentlearning/studentreports/schools/whatsnew.htm>.

^^ 2008 benchmarks and percentiles will be calculated in August, when data from all schools has been submitted.

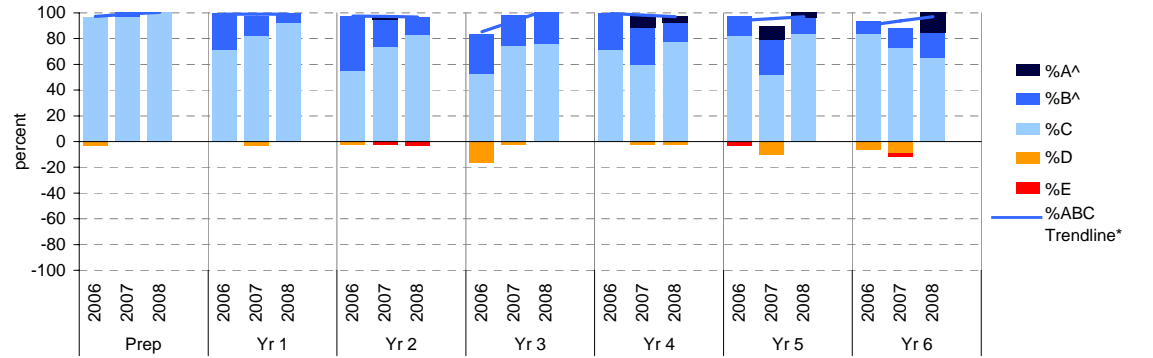
Number

	total		% of students by grade					Mean Score			total		% of students by grade					Mean Score	
	students		A^	B^	C	D	E	School	State**		students		A^	B^	C	D	E	School	State**
Prep	2006	31	0	35	61	3	0	1.02	1.00	Yr 4	2006	28	0	25	71	4	0	3.00	2.95
	2007	32	0	16	84	0	0	0.91	1.00		2007	35	14	31	51	3	0	3.09	2.96
	2008	32	0	6	91	3	0	0.89			2008	40	5	15	75	5	0	2.99	
Yr 1	2006	35	0	26	74	0	0	1.56	1.51	Yr 5	2006	33	0	36	61	0	3	3.48	3.43
	2007	33	0	27	70	3	0	1.50	1.51		2007	29	24	14	52	10	0	3.58	3.44
	2008	26	0	12	88	0	0	1.46			2008	31	3	16	74	6	0	3.48	
Yr 2	2006	40	0	35	63	3	0	2.06	1.99	Yr 6	2006	30	0	27	63	7	3	3.95	3.93
	2007	38	3	18	76	0	3	1.99	1.99		2007	33	0	9	76	12	3	3.83	3.95
	2008	30	0	20	77	0	3	1.94			2008	26	19	19	58	4	0	4.03	
Yr 3	2006	36	0	33	50	17	0	2.47	2.46										
	2007	43	0	23	74	2	0	2.52	2.48										
	2008	33	0	27	61	12	0	2.44											



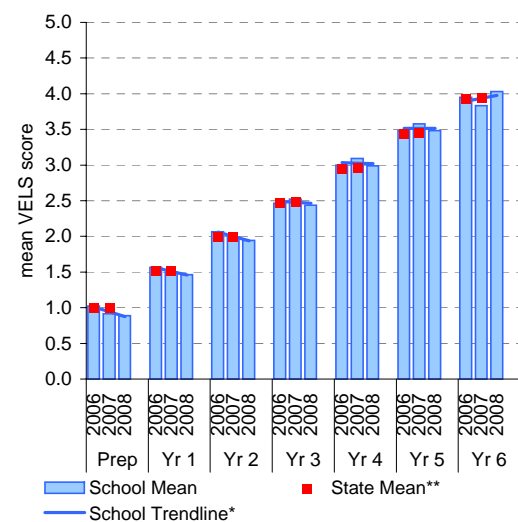
Measurement, Chance and Data

	total		% of students by grade					Mean Score			total		% of students by grade					Mean Score	
	students		A^	B^	C	D	E	School	State**		students		A^	B^	C	D	E	School	State**
Prep	2006	31	0	0	97	3	0	0.90	0.97	Yr 4	2006	28	0	29	71	0	0	3.04	2.94
	2007	32	0	3	97	0	0	0.91	0.97		2007	35	9	29	60	3	0	3.09	2.95
	2008	32	0	0	100	0	0	0.97			2008	40	5	15	78	3	0	3.01	
Yr 1	2006	35	0	29	71	0	0	1.60	1.48	Yr 5	2006	33	0	15	82	0	3	3.48	3.42
	2007	33	0	15	82	3	0	1.52	1.49		2007	29	10	28	52	10	0	3.52	3.43
	2008	26	0	8	92	0	0	1.47			2008	31	3	13	84	0	0	3.49	
Yr 2	2006	40	0	43	55	3	0	2.08	1.97	Yr 6	2006	30	0	10	83	7	0	3.97	3.92
	2007	38	3	21	74	0	3	2.01	1.98		2007	33	0	15	73	9	3	3.90	3.93
	2008	30	0	13	83	0	3	1.95			2008	26	15	19	65	0	0	4.07	
Yr 3	2006	36	0	31	53	17	0	2.45	2.45										
	2007	43	0	23	74	2	0	2.53	2.46										
	2008	33	0	24	76	0	0	2.48											

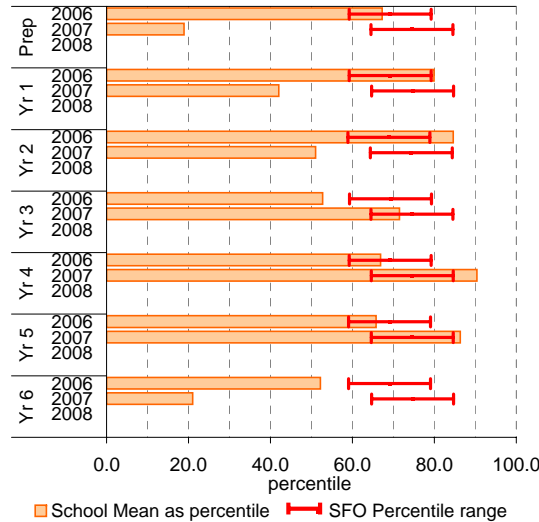


Number

School Mean against State Mean^^

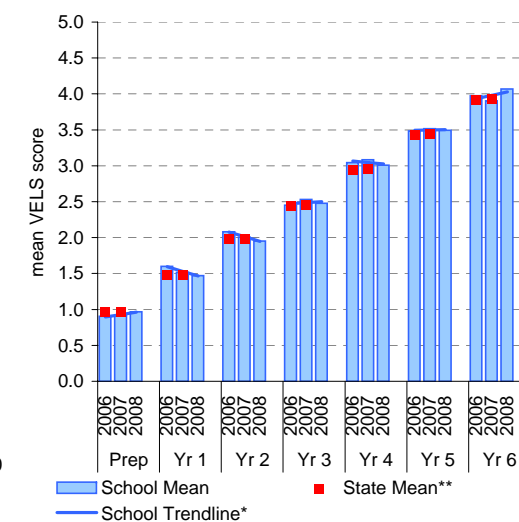


School Mean as percentile against SFO percentile range^^

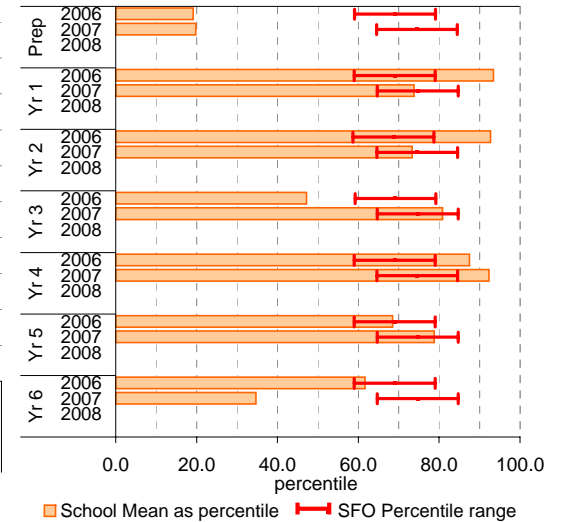


Measurement, Chance and Data

School Mean against State Mean^^



School Mean as percentile against SFO percentile range^^



Teacher Judgments against the VELS - English (primary)

School no: 4935
School name: Watsonia Heights Primary School
Source of data: Data retrieved electronically from CASES21.
Explanation: Teacher judgments of student achievement against the VELS.

Reading

Year Level	Year	Total ¹	Assessed ²	Level 1			Level 2				Level 3				Level 4				Level 5				Level 6				Level 6E			School mean	State mean ³	Difference between school and state mean ⁴
				0.00	0.50	1.00	1.25	1.50	1.75	2.00	2.25	2.50	2.75	3.00	3.25	3.50	3.75	4.00	4.25	4.50	4.75	5.00	5.25	5.50	5.75	6.00	6.25	6.50	6.75			
prep	2008	32	32	2	4	15	11																			0.96						
prep	2007	32	32		5	19	6	2																		1.00	1.01	-0.01				
yr1	2008	26	26		1	5	17	3																		1.46						
prep	2006	31	31	1	20		3	7																		1.10	1.01	0.09				
yr1	2007	33	33	1	1	1	17	6	5		1	1														1.61	1.57	0.03				
yr2	2008	30	30		1		3	15			7	4														2.05						
prep	2005																															
yr1	2006	35	35		1	5	14	10	2		3																1.61	1.57	0.05			
yr2	2007	38	38		1		1	5	13			7	11														2.11	2.06	0.05			
yr3	2008	33	33					2	7	15	8	1													2.49							
yr1	2005																															
yr2	2006	40	40				1	2	17		18	2														2.14	2.04	0.10				
yr3	2007	43	43					3	4	23	13													2.52	2.50	0.02						
yr4	2008	40	40						3	8	9		18	2														3.05				
yr2	2005																															
yr3	2006	37	37	1			2	7	12	9	3		3												2.53	2.49	0.05					
yr4	2007	35	35					1	7	20		3	4														3.01	2.97	0.04			
yr5	2008	31	31									8	12	10	1													3.53				
yr3	2005																															
yr4	2006	28	28					2	8	5		13												3.01	2.96	0.05						
yr5	2007	29	29								2	5	12	5	5													3.55	3.45	0.10		
yr6	2008	26	26										6	14	6													4.00				
yr4	2005																															
yr5	2006	33	33					1	3	18	5	6													3.58	3.44	0.14					
yr6	2007	33	33						1	3	8	16		5												3.90	3.95	-0.05				
yr5	2005																															
yr6	2006	30	30									2	5	18		5												3.97	3.94	0.03		
yr6	2005																															

shading indicates a 'C' grade (at the expected standard) on the VELS scale.

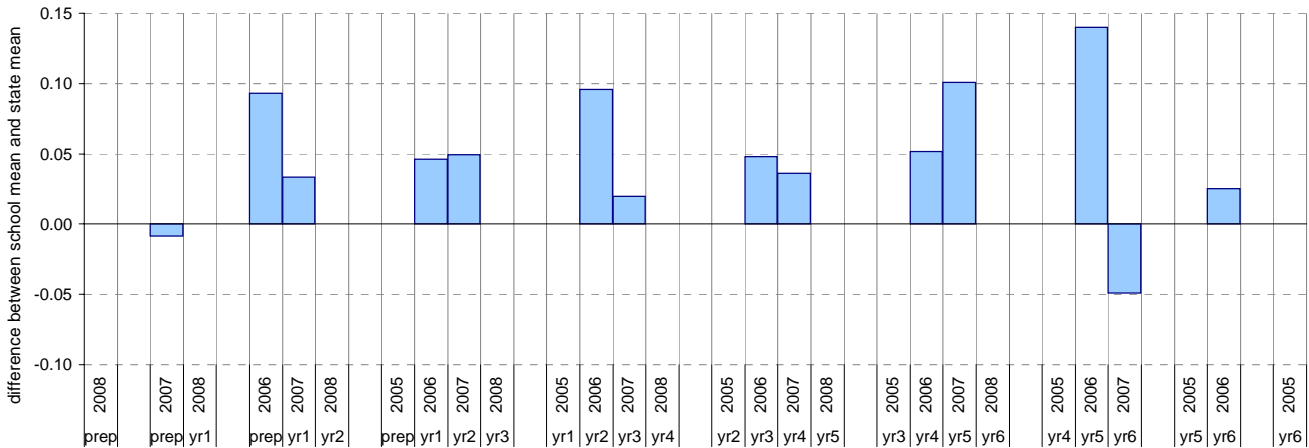
¹ The total number of students eligible to be assessed. This figure will typically match, or be very close to, the Year Level enrolment.

² The number of students assessed against the VELS. The difference between this figure and the total (1) should be accounted for by students assessed against Individual Learning Plans and/or the ESL companion in the case of English.

* In 2006, approx. 850 schools assessed their students against the 0.25 VELS scale. 2006 benchmarks are therefore based on a subset of schools.

⁴ 2008 benchmarks will be calculated in August, when data from all schools has been submitted.

Difference between school mean and state mean⁴, by cohort group



Teacher Judgments against the VELS - English (primary)

School no: 4935
School name: Watsonia Heights Primary School
Source of data: Data retrieved electronically from CASES21.
Explanation: Teacher judgments of student achievement against the VELS.

Writing

Year Level	Year	Total ¹	Assessed ²	Level 1			Level 2				Level 3				Level 4				Level 5				Level 6				Level 6E			School mean	State mean ³	Difference between school and state mean ⁴					
				0.00	0.50	1.00	1.25	1.50	1.75	2.00	2.25	2.50	2.75	3.00	3.25	3.50	3.75	4.00	4.25	4.50	4.75	5.00	5.25	5.50	5.75	6.00	6.25	6.50	6.75								
prep	2008	32	32	2	6	20	4																									0.88					
prep	2007	32	32		10	17	5																									0.88	0.97	-0.09			
yr1	2008	26	26		1		7	17	1																							1.42					
prep	2006	31	31	1	3	19	8																										0.98	0.97	0.02		
yr1	2007	33	33	1			6	20	3	2	1																						1.48	1.49	0.00		
yr2	2008	30	30		1			1	6	18	4																						1.92				
prep	2005																																				
yr1	2006	35	35		1		7	18	9																									1.50	1.47	0.03	
yr2	2007	38	38		1		2	9	15	9	2																							1.97	1.96	0.01	
yr3	2008	33	33						3	11	18	1																						2.38			
yr1	2005																																				
yr2	2006	40	40				2	7	23	8																									1.98	1.95	0.03
yr3	2007	43	43						3	3	29	8																							2.49	2.43	0.06
yr4	2008	40	40							3	9	19	9																						2.96		
yr2	2005																																				
yr3	2006	37	37	1					4	11	9	9	3																						2.42	2.42	0.00
yr4	2007	35	35							1	3	7	18	4	2																				2.94	2.91	0.04
yr5	2008	31	31									1	10	14	4	2																			3.47		
yr3	2005																																				
yr4	2006	28	28							2	13	9	4																						2.88	2.89	-0.01
yr5	2007	29	29									5	6	8	8	2																			3.47	3.39	0.08
yr6	2008	26	26											1	6	16	3																		3.95		
yr4	2005																																				
yr5	2006	33	33							1			3	27	2																				3.46	3.38	0.08
yr6	2007	33	33								1		2	2	5	19	4																		3.88	3.89	-0.01
yr5	2005																																				
yr6	2006	30	30											3	4	19	3	1																	3.96	3.88	0.08
yr6	2005																																				

shading indicates a 'C' grade (at the expected standard) on the VELS scale.

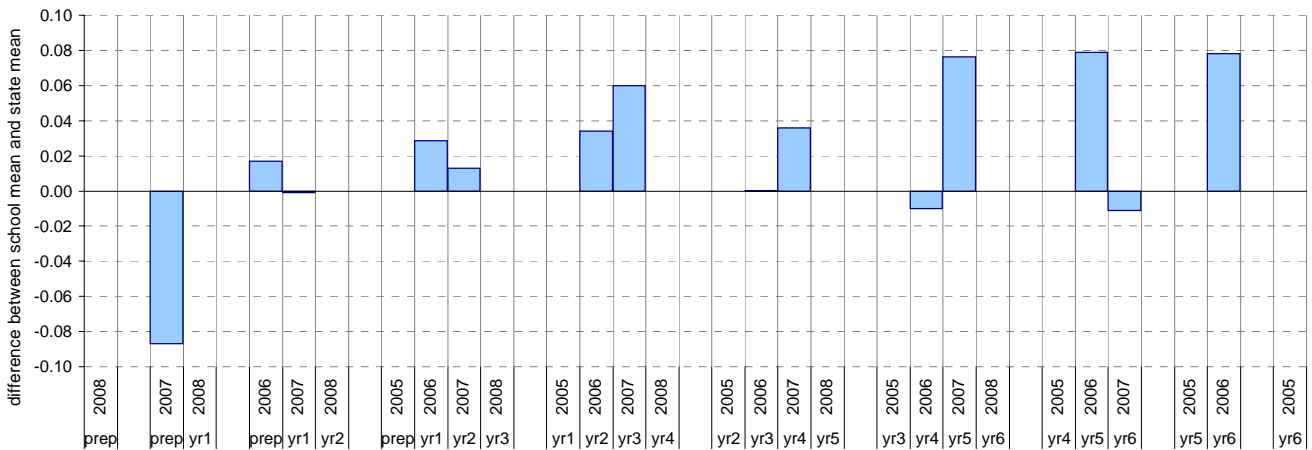
¹ The total number of students eligible to be assessed. This figure will typically match, or be very close to, the Year Level enrolment.

² The number of students assessed against the VELS. The difference between this figure and the total (1) should be accounted for by students assessed against Individual Learning Plans and/or the ESL companion in the case of English.

* In 2006, approx. 850 schools assessed their students against the 0.25 VELS scale. 2006 benchmarks are therefore based on a subset of schools.

⁴ 2008 benchmarks will be calculated in August, when data from all schools has been submitted.

Difference between school mean and state mean⁴, by cohort group



Teacher Judgments against the VELS - English (primary)

School no: 4935
School name: Watsonia Heights Primary School
Source of data: Data retrieved electronically from CASES21.
Explanation: Teacher judgments of student achievement against the VELS.

Speaking and Listening

Year Level	Year	Total ¹	Assessed ²	Level 1			Level 2				Level 3				Level 4				Level 5				Level 6				Level 6E			School mean	State mean* [^]	Difference between school and state mean* [^]	
				0.00	0.50	1.00	1.25	1.50	1.75	2.00	2.25	2.50	2.75	3.00	3.25	3.50	3.75	4.00	4.25	4.50	4.75	5.00	5.25	5.50	5.75	6.00	6.25	6.50	6.75				
prep	2008	32	32	8	24																										0.88		
prep	2007	32	32	3	27	2																								0.97	0.97	0.00	
yr1	2008	26	26	3	2	21																								1.42			
prep	2006	31	31	1	2	21	5	2																						1.01	0.97	0.04	
yr1	2007	33	33	1	2	23	4	3																						1.55	1.48	0.06	
yr2	2008	30	30	1	1	4	22	2																						1.93			
prep	2005																																
yr1	2006	35	35		2	26	7																								1.54	1.48	0.06
yr2	2007	38	38		1	6	21	9	1																						2.01	1.98	0.04
yr3	2008	33	33				1	10	21	1																					2.42		
yr1	2005																																
yr2	2006	40	40			1	1	32	6																						2.02	1.98	0.04
yr3	2007	43	43					4	30	8																					2.51	2.46	0.05
yr4	2008	40	40						1	5	23	10	1																		3.03		
yr2	2005																																
yr3	2006	37	37				1	6	27	3																					2.46	2.45	0.01
yr4	2007	35	35					2	2	29	2																				2.96	2.94	0.01
yr5	2008	31	31						1	6	17	6	1																		3.50		
yr3	2005																																
yr4	2006	28	28						2	24	2																				3.00	2.94	0.06
yr5	2007	29	29						2	7	13	2	5																		3.51	3.43	0.08
yr6	2008	26	26							3	3	16	4																		3.95		
yr4	2005																																
yr5	2006	33	33						1	5	22	5																			3.48	3.43	0.06
yr6	2007	33	33						1	3	1	4	19	5																	3.89	3.94	-0.05
yr5	2005																																
yr6	2006	30	30								6	15	8	1																	4.03	3.93	0.10
yr6	2005																																

shading indicates a 'C' grade (at the expected standard) on the VELS scale.

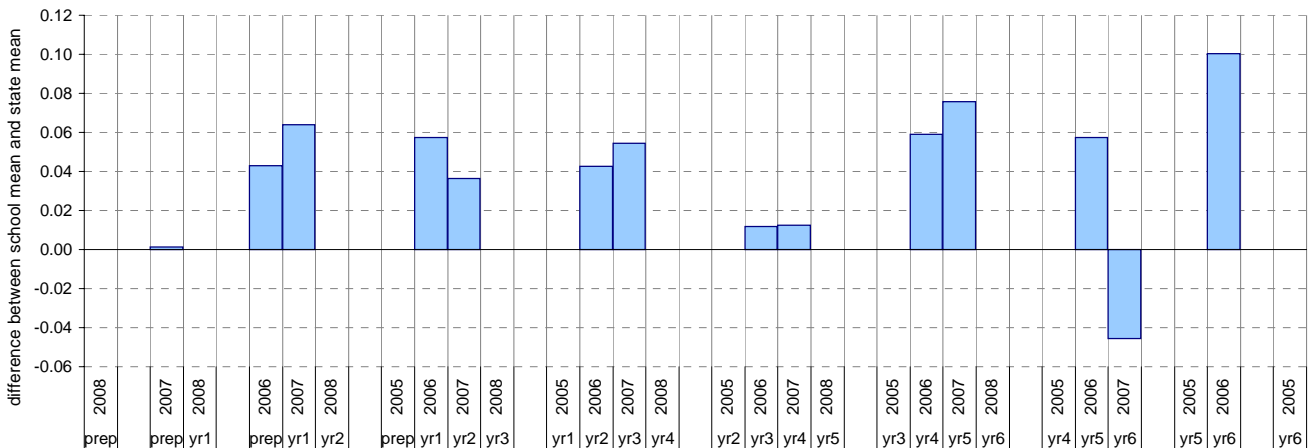
¹ The total number of students eligible to be assessed. This figure will typically match, or be very close to, the Year Level enrolment.

² The number of students assessed against the VELS. The difference between this figure and the total (1) should be accounted for by students assessed against Individual Learning Plans and/or the ESL companion in the case of English.

* In 2006, approx. 850 schools assessed their students against the 0.25 VELS scale. 2006 benchmarks are therefore based on a subset of schools.

[^] 2008 benchmarks will be calculated in August, when data from all schools has been submitted.

Difference between school mean and state mean*[^], by cohort group



Teacher Judgments against the VELS - Mathematics (primary)

School no: 4935
School name: Watsonia Heights Primary School
Source of data: Data retrieved electronically from CASES21.
Explanation: Teacher judgments of student achievement against the VELS.

Number

Year Level	Year	Total ¹	Assessed ²	Level 1			Level 2				Level 3				Level 4				Level 5				Level 6				Level 6E			School mean	State mean ³	Difference between school and state mean ⁴						
				0.00	0.50	1.00	1.25	1.50	1.75	2.00	2.25	2.50	2.75	3.00	3.25	3.50	3.75	4.00	4.25	4.50	4.75	5.00	5.25	5.50	5.75	6.00	6.25	6.50	6.75									
prep	2008	32	32	1	6	23	2																									0.89						
prep	2007	32	32		8	19	5																									0.91	1.00	-0.08				
yr1	2008	26	26				7	16	3																							1.46						
prep	2006	31	31	1	2	17	11																										1.02	1.00	0.03			
yr1	2007	33	33			1	7	16	9																								1.50	1.51	-0.01			
yr2	2008	30	30		1			7	16	6																							1.94					
prep	2005																																					
yr1	2006	35	35				4	22	5	4																								1.56	1.51	0.06		
yr2	2007	38	38		1			6	23	7	1																							1.99	1.99	0.00		
yr3	2008	33	33						4	9	11	9																						2.44				
yr1	2005																																					
yr2	2006	40	40					1	2	23	14																								2.06	1.99	0.07	
yr3	2007	43	43						1	4	28	10																							2.52	2.48	0.05	
yr4	2008	40	40							2	8	22	6	2																					2.99			
yr2	2005																																					
yr3	2006	36	36					6	5	13	12																								2.47	2.46	0.00	
yr4	2007	35	35							1	6	12	11	5																					3.09	2.96	0.13	
yr5	2008	31	31								2	5	18	5	1																				3.48			
yr3	2005																																					
yr4	2006	28	28							1	6	14	6	1																					3.00	2.95	0.05	
yr5	2007	29	29								3	7	8	4	3	4																			3.58	3.44	0.13	
yr6	2008	26	26										1	10	5	5	5																		4.03			
yr4	2005																																					
yr5	2006	33	33					1				8	12	12																						3.48	3.43	0.05
yr6	2007	33	33								1	3	11	14	3																					3.83	3.95	-0.11
yr5	2005																																					
yr6	2006	30	30								1	2	6	13	8																					3.95	3.93	0.02
yr6	2005																																					

shading indicates a 'C' grade (at the expected standard) on the VELS scale.

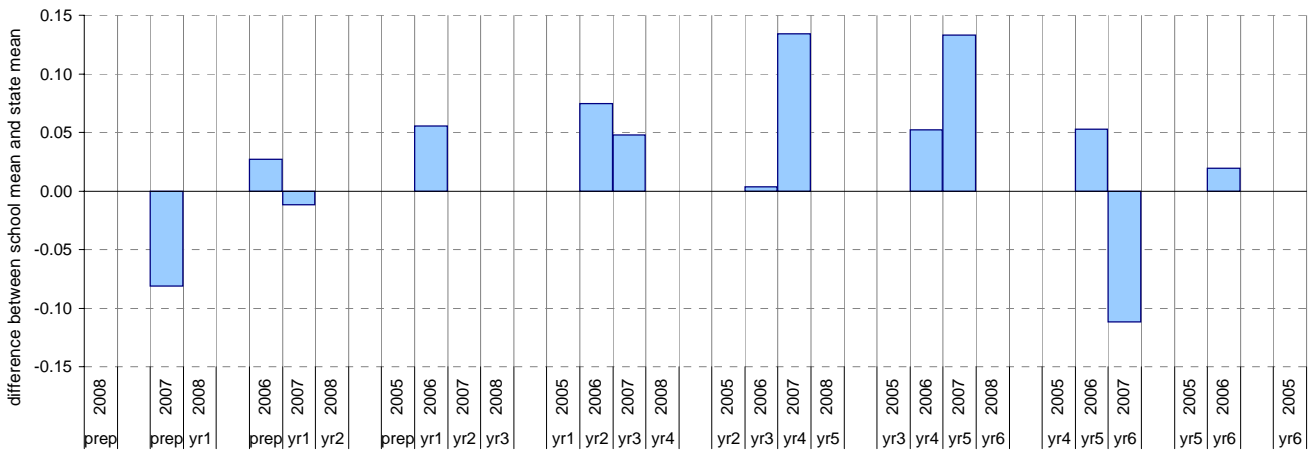
¹ The total number of students eligible to be assessed. This figure will typically match, or be very close to, the Year Level enrolment.

² The number of students assessed against the VELS. The difference between this figure and the total (1) should be accounted for by students assessed against Individual Learning Plans and/or the ESL companion in the case of English.

* In 2006, approx. 850 schools assessed their students against the 0.25 VELS scale. 2006 benchmarks are therefore based on a subset of schools.

⁴ 2008 benchmarks will be calculated in August, when data from all schools has been submitted.

Difference between school mean and state mean⁴, by cohort group



Teacher Judgments against the VELS - Mathematics (primary)

School no: 4935
School name: Watsonia Heights Primary School
Source of data: Data retrieved electronically from CASES21.
Explanation: Teacher judgments of student achievement against the VELS.

Measurement, Chance and Data

Year Level	Year	Total ¹	Assessed ²	Level 1			Level 2				Level 3				Level 4				Level 5				Level 6				Level 6E			School mean	State mean ³	Difference between school and state mean ⁴						
				0.00	0.50	1.00	1.25	1.50	1.75	2.00	2.25	2.50	2.75	3.00	3.25	3.50	3.75	4.00	4.25	4.50	4.75	5.00	5.25	5.50	5.75	6.00	6.25	6.50	6.75									
prep	2008	32	32	2	30																											0.97						
prep	2007	32	32	6	25	1																										0.91	0.97	-0.06				
yr1	2008	26	26			5	19	2																									1.47					
prep	2006	31	31	1	4	26																												0.90	0.97	-0.07		
yr1	2007	33	33		1		1	26	5																									1.52	1.49	0.03		
yr2	2008	30	30		1			4	21	4																								1.95				
prep	2005																																					
yr1	2006	35	35				25	6	4																										1.60	1.48	0.12	
yr2	2007	38	38		1			5	23	8	1																								2.01	1.98	0.03	
yr3	2008	33	33							11	14	8																							2.48			
yr1	2005																																					
yr2	2006	40	40					1	2	20	17																									2.08	1.97	0.11
yr3	2007	43	43							1	3	29	10																							2.53	2.46	0.07
yr4	2008	40	40								1	7	24	6	2																					3.01		
yr2	2005																																					
yr3	2006	36	36					6		6	13	11																								2.45	2.45	0.00
yr4	2007	35	35							1	2	19	10	3																						3.09	2.95	0.14
yr5	2008	31	31										7	19	4	1																				3.49		
yr3	2005																																					
yr4	2006	28	28								4	16	7	1																						3.04	2.94	0.11
yr5	2007	29	29									3	6	9	8	3																				3.52	3.43	0.08
yr6	2008	26	26														6	11	5	4															4.07			
yr4	2005																																					
yr5	2006	33	33							1			2	25	5																					3.48	3.42	0.06
yr6	2007	33	33								1		1	2	6	18	5																			3.90	3.93	-0.03
yr5	2005																																					
yr6	2006	30	30											2	2	23	3																			3.97	3.92	0.05
yr6	2005																																					

shading indicates a 'C' grade (at the expected standard) on the VELS scale.

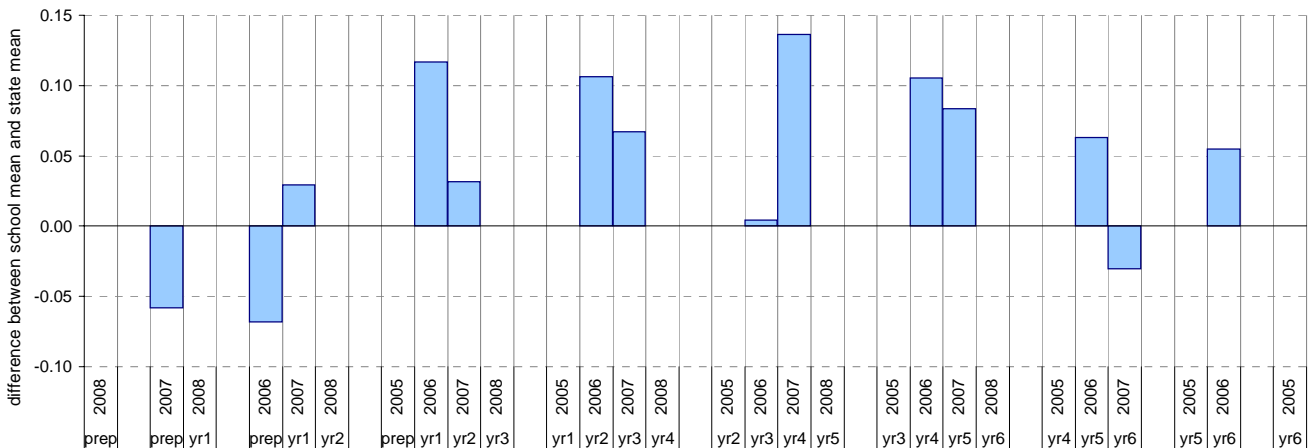
¹ The total number of students eligible to be assessed. This figure will typically match, or be very close to, the Year Level enrolment.

² The number of students assessed against the VELS. The difference between this figure and the total (1) should be accounted for by students assessed against Individual Learning Plans and/or the ESL companion in the case of English.

* In 2006, approx. 850 schools assessed their students against the 0.25 VELS scale. 2006 benchmarks are therefore based on a subset of schools.

⁴ 2008 benchmarks will be calculated in August, when data from all schools has been submitted.

Difference between school mean and state mean⁴, by cohort group



NAPLAN Year 3 and 5: Reading

School no: 4935

School name: Watsonia Heights Primary School

Source of data: Victorian Curriculum and Assessment Authority.

Explanation: The National Assessment Program - Literacy and Numeracy (NAPLAN) is conducted each year for students in Years 3, 5, 7 and 9. For more detailed NAPLAN data, refer to the NAPLAN Data Service website at <http://naplands.vcaa.vic.edu.au>. A reference guide for analysing NAPLAN data is available at <http://www.vcaa.vic.edu.au/vcaa/prep10/naplan/schools/analysingnaplandata.pdf>.

Notes: * % student participation = (students who participated in NAPLAN / February enrolments) * 100

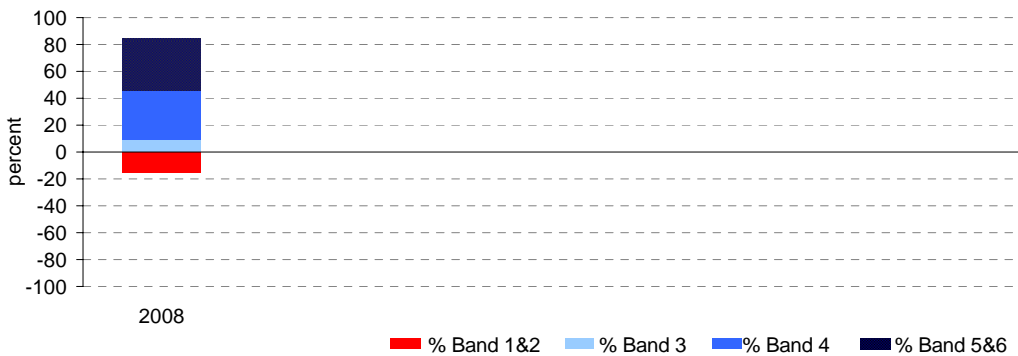
Year 3

	student participation		Percent of students by NAP Band						Mean Scaled Score	
	(n)	(%)*	Band 1	Band 2	Band 3	Band 4	Band 5	Band 6	School	State
2008	33	94	3	12	9	36	21	18	407.8	415.8

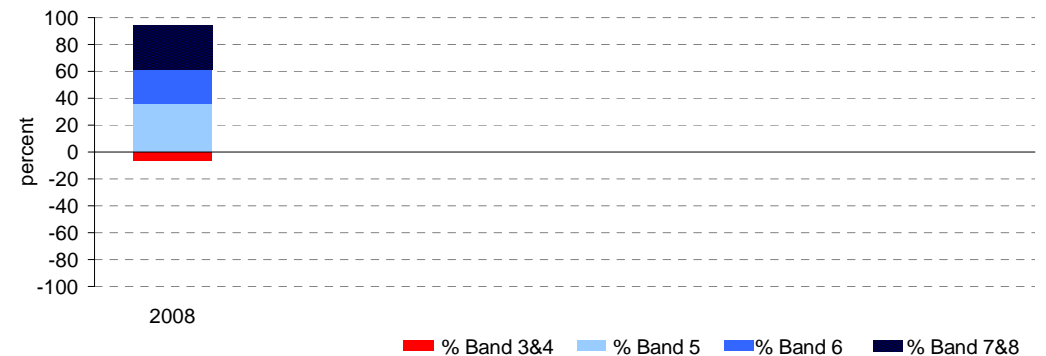
Year 5

	student participation		Percent of students by NAP Band						Mean Scaled Score	
	(n)	(%)*	Band 3	Band 4	Band 5	Band 6	Band 7	Band 8	School	State
2008	31	87	0	7	36	26	7	26	511.3	492.1

Percent of students by NAP Band

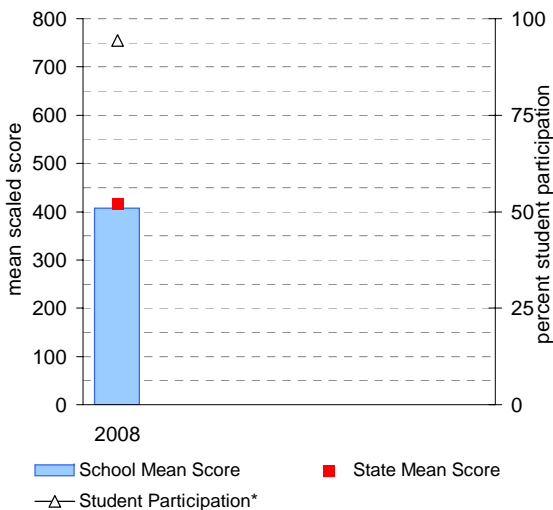


Percent of students by NAP Band

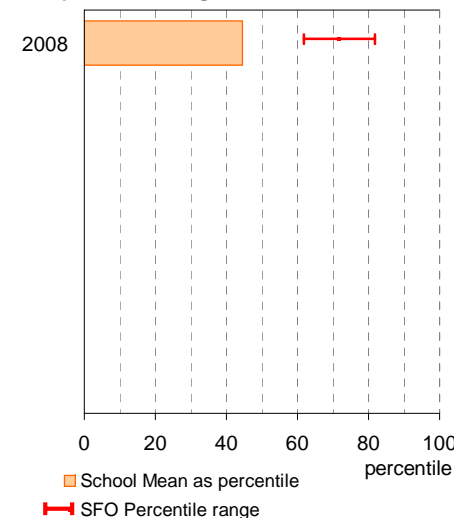


Year 3

School Mean against State Mean, including Participation

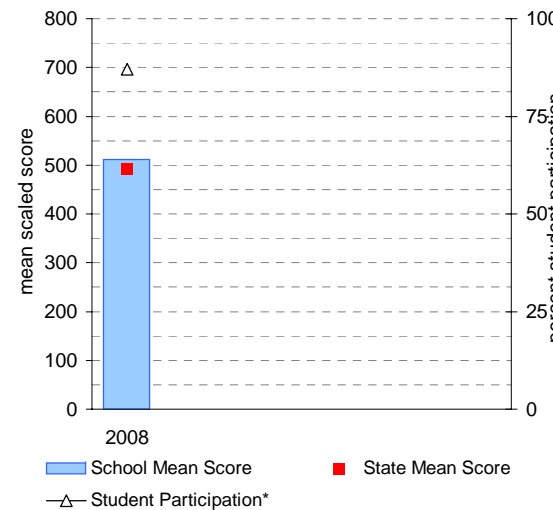


School Mean as percentile against SFO percentile range

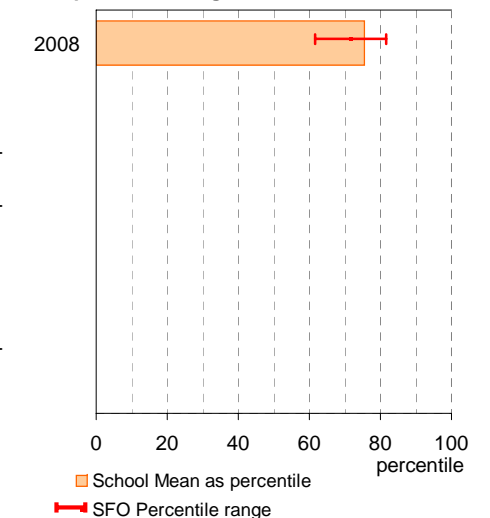


Year 5

School Mean against State Mean, including Participation



School Mean as percentile against SFO percentile range



NAPLAN Year 3 and 5: Writing

School no: 4935

School name: Watsonia Heights Primary School

Source of data: Victorian Curriculum and Assessment Authority.

Explanation: The National Assessment Program - Literacy and Numeracy (NAPLAN) is conducted each year for students in Years 3, 5, 7 and 9. For more detailed NAPLAN data, refer to the NAPLAN Data Service website at <http://naplands.vcaa.vic.edu.au>. A reference guide for analysing NAPLAN data is available at <http://www.vcaa.vic.edu.au/vcaa/prep10/naplan/schools/analysingnaplandata.pdf>.

Notes: * % student participation = (students who participated in NAPLAN / February enrolments) * 100

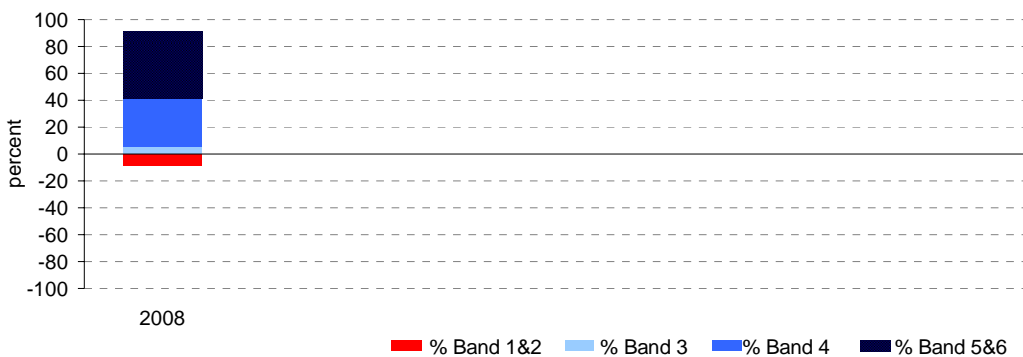
Year 3

	student participation		Percent of students by NAP Band						Mean Scaled Score	
	(n)	(%)*	Band 1	Band 2	Band 3	Band 4	Band 5	Band 6	School	State
2008	34	97	0	9	6	35	35	15	417.8	421.2

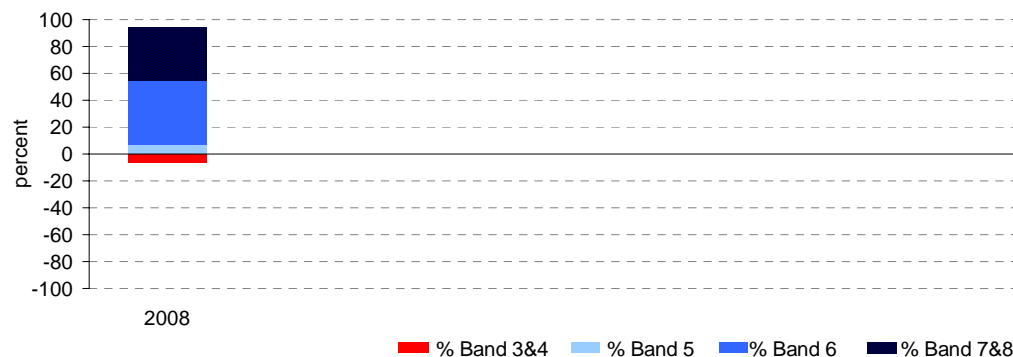
Year 5

	student participation		Percent of students by NAP Band						Mean Scaled Score	
	(n)	(%)*	Band 3	Band 4	Band 5	Band 6	Band 7	Band 8	School	State
2008	31	87	3	3	7	48	29	10	516.4	496.0

Percent of students by NAP Band

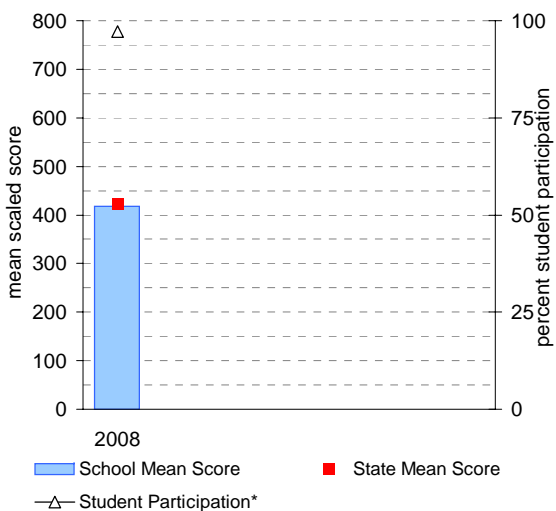


Percent of students by NAP Band

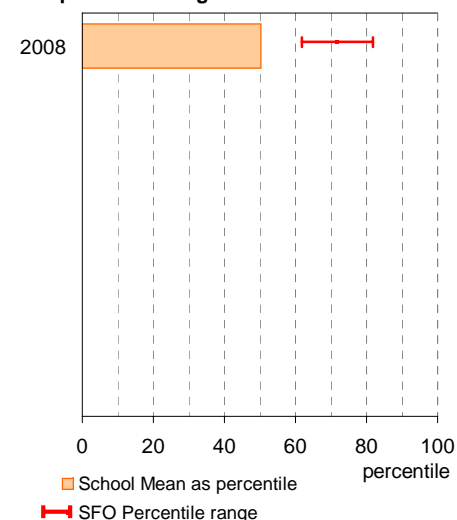


Year 3

School Mean against State Mean, including Participation

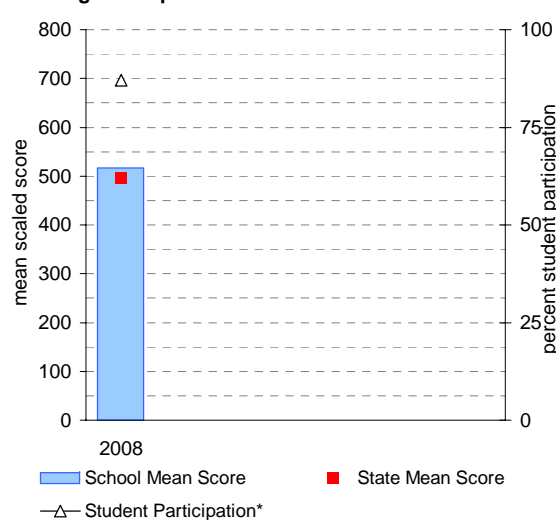


School Mean as percentile against SFO percentile range

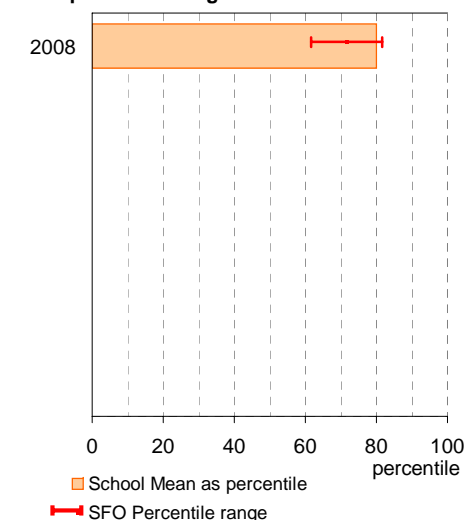


Year 5

School Mean against State Mean, including Participation



School Mean as percentile against SFO percentile range



NAPLAN Year 3 and 5: Numeracy

School no: 4935

School name: Watsonia Heights Primary School

Source of data: Victorian Curriculum and Assessment Authority.

Explanation: The National Assessment Program - Literacy and Numeracy (NAPLAN) is conducted each year for students in Years 3, 5, 7 and 9. For more detailed NAPLAN data, refer to the NAPLAN Data Service website at <http://naplands.vcaa.vic.edu.au>. A reference guide for analysing NAPLAN data is available at <http://www.vcaa.vic.edu.au/vcaa/prep10/naplan/schools/analysingnaplandata.pdf>.

Notes: * % student participation = (students who participated in NAPLAN / February enrolments) * 100

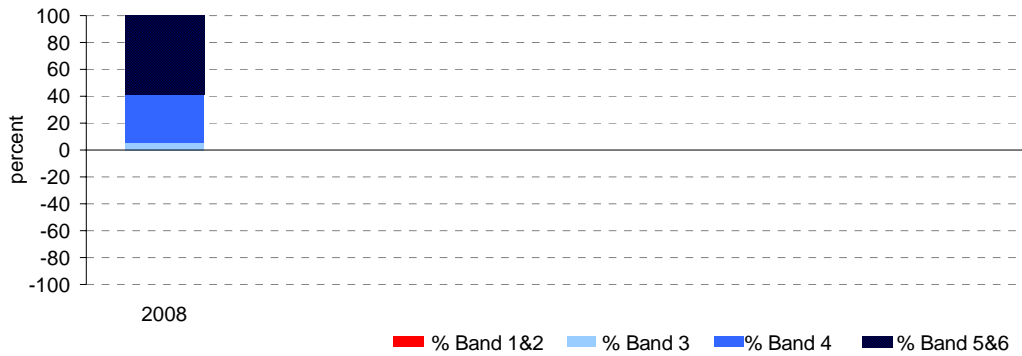
Year 3

	student participation		Percent of students by NAP Band						Mean Scaled Score	
	(n)	(%)*	Band 1	Band 2	Band 3	Band 4	Band 5	Band 6	School	State
2008	34	97	0	0	6	35	29	29	446.9	416.1

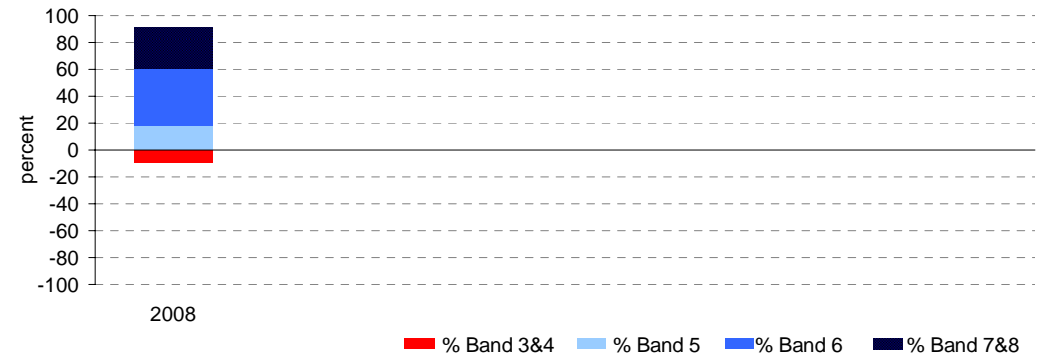
Year 5

	student participation		Percent of students by NAP Band						Mean Scaled Score	
	(n)	(%)*	Band 3	Band 4	Band 5	Band 6	Band 7	Band 8	School	State
2008	33	93	3	6	18	42	18	12	507.2	487.8

Percent of students by NAP Band

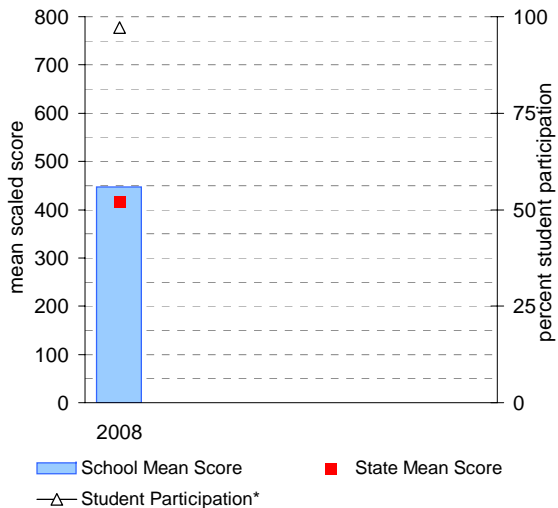


Percent of students by NAP Band

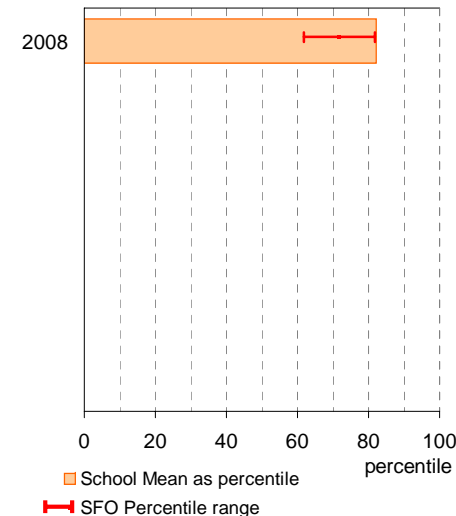


Year 3

School Mean against State Mean, including Participation

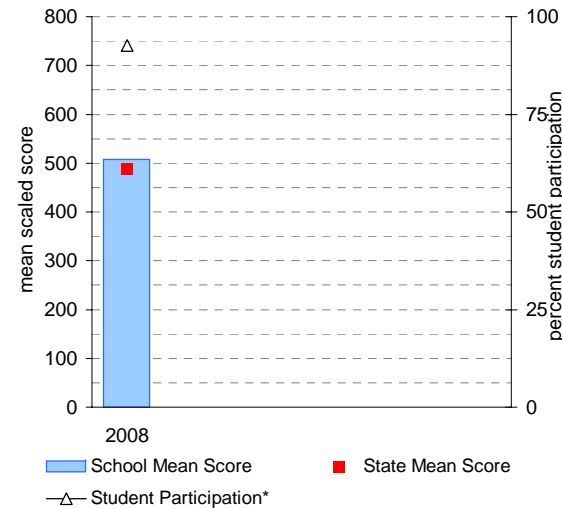


School Mean as percentile against SFO percentile range

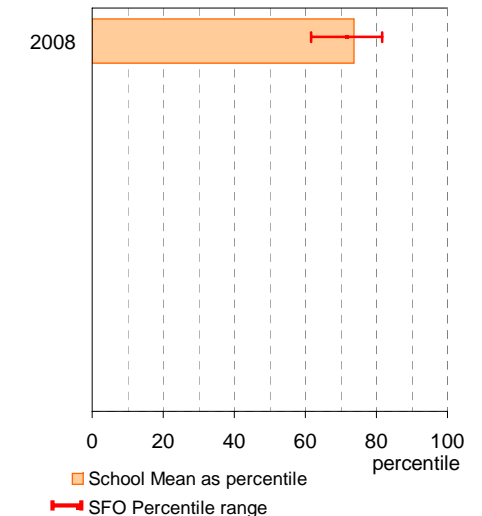


Year 5

School Mean against State Mean, including Participation



School Mean as percentile against SFO percentile range



AIM Year 3 and 5: Reading

School no: 4935

School name: Watsonia Heights Primary School

Source of data: Victorian Curriculum and Assessment Authority.

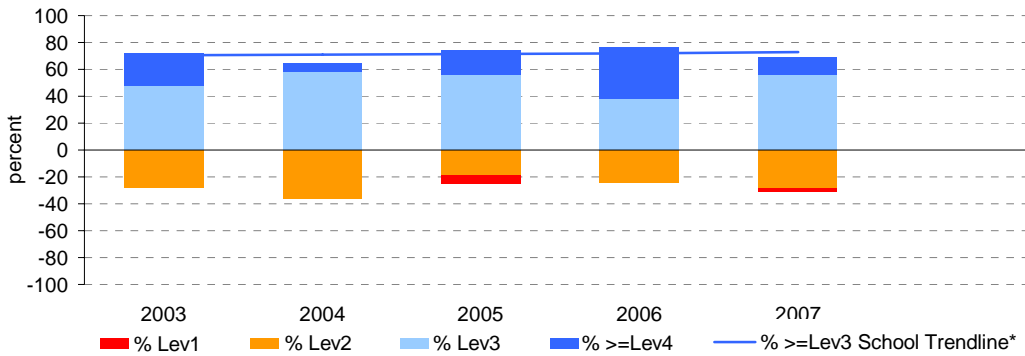
Explanation: The Achievement Improvement Monitor (AIM) was a statewide assessment program conducted each year up until and including 2007 for students in Years 3, 5, 7 and 9. This has now been replaced by NAPLAN. For more detailed AIM data, refer to the AIM Data Service website at <http://aimds.vcaa.vic.edu.au>.

Notes: * The school trendline is only plotted when there is data for each calendar year.
** % student participation = (students who participated in AIM / Feb enrolments) * 100

Year 3

	student participation		Percent of students by VEL5 level							Mean CSF / VEL5 Score	
	(n)	(%)**	Lev1	Lev2	Lev3	Lev4	Lev5	Lev6	Lev6E	School	State
2003	29	88	0	28	48	24	0	0	0	2.5	2.3
2004	31	94	0	35	58	6	0	0	0	2.2	2.3
2005	32	97	6	19	56	19	0	0	0	2.3	2.4
2006	34	98	0	24	38	38	0	0	0	2.6	2.3
2007	39	95	3	28	56	13	0	0	0	2.4	2.3

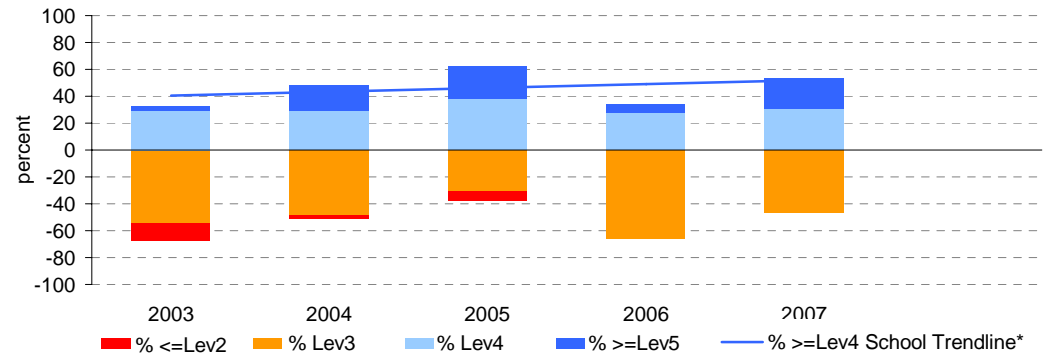
Percent of students by VEL5 level



Year 5

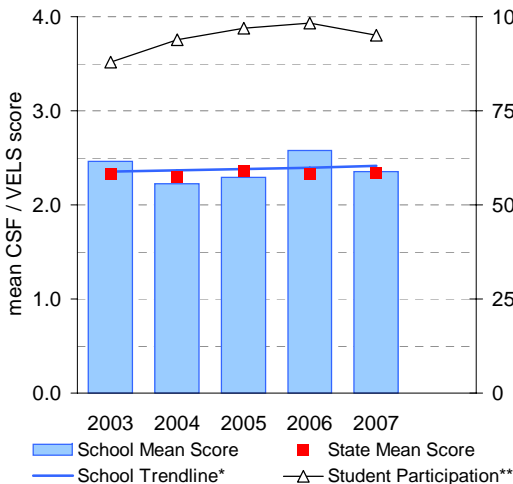
	student participation		Percent of students by VEL5 level						Mean CSF / VEL5 Score		
	(n)	(%)**	Lev1	Lev2	Lev3	Lev4	Lev5	Lev6	Lev6E	School	State
2003	31	86	0	13	55	29	3	0	0	2.8	3.2
2004	37	95	0	3	49	30	19	0	0	3.1	3.2
2005	29	91	0	7	31	38	24	0	0	3.2	3.2
2006	32	91	0	0	66	28	6	0	0	2.8	3.1
2007	26	90	0	0	46	31	23	0	0	3.2	3.2

Percent of students by VEL5 level



Year 3

School Mean against State Mean, including Participation

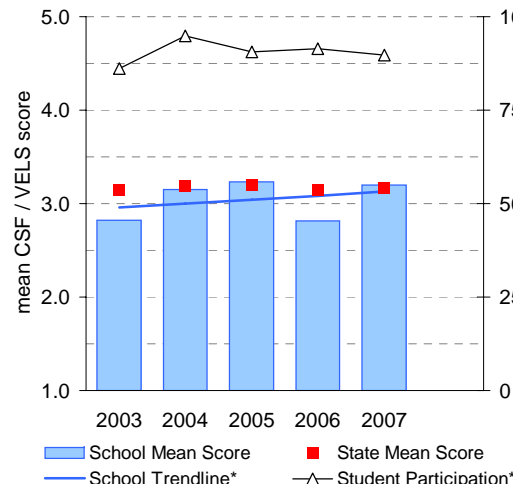


School Mean as percentile against SFO percentile range

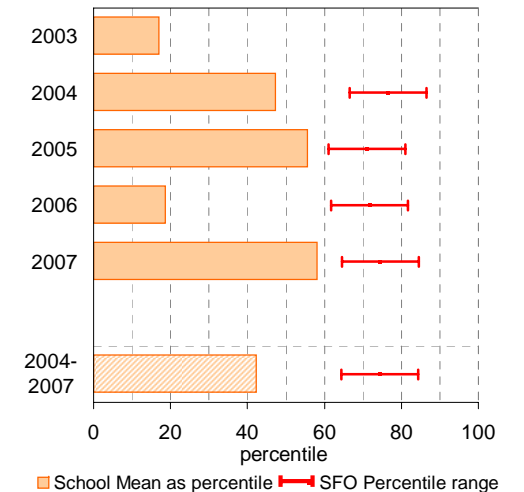


Year 5

School Mean against State Mean, including Participation



School Mean as percentile against SFO percentile range



AIM Year 3 and 5: Number

School no: 4935

School name: Watsonia Heights Primary School

Source of data: Victorian Curriculum and Assessment Authority.

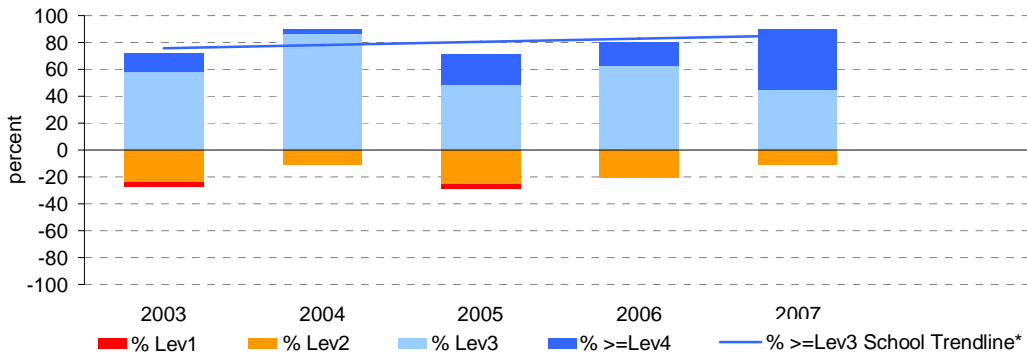
Explanation: The Achievement Improvement Monitor (AIM) was a statewide assessment program conducted each year up until and including 2007 for students in Years 3, 5, 7 and 9. This has now been replaced by NAPLAN. For more detailed AIM data, refer to the AIM Data Service website at <http://aimds.vcaa.vic.edu.au>.

Notes: * The school trendline is only plotted when there is data for each calendar year.
 ** % student participation = (students who participated in AIM / Feb enrolments) * 100

Year 3

	student participation		Percent of students by VEL5 level							Mean CSF / VEL5 Score	
	(n)	(%)**	Lev1	Lev2	Lev3	Lev4	Lev5	Lev6	Lev6E	School	State
2003	29	88	3	24	59	14	0	0	0	2.3	2.4
2004	29	88	0	10	86	3	0	0	0	2.4	2.4
2005	31	94	3	26	48	23	0	0	0	2.3	2.4
2006	35	101	0	20	63	17	0	0	0	2.4	2.4
2007	38	93	0	11	45	45	0	0	0	2.9	2.4

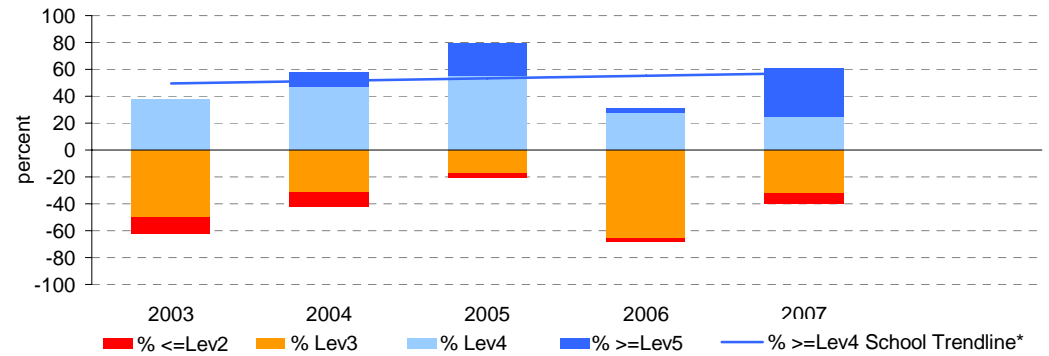
Percent of students by VEL5 level



Year 5

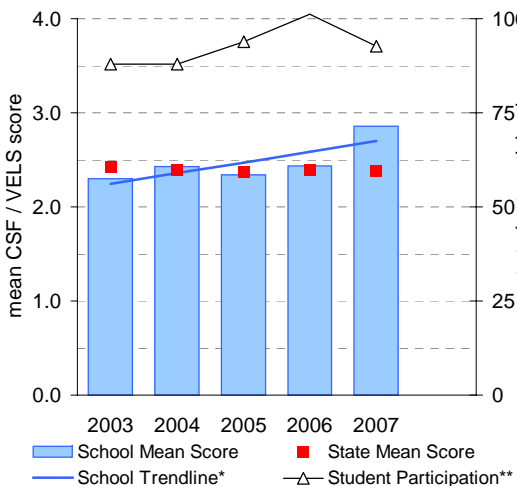
	student participation		Percent of students by VEL5 level							Mean CSF / VEL5 Score	
	(n)	(%)**	Lev1	Lev2	Lev3	Lev4	Lev5	Lev6	Lev6E	School	State
2003	32	89	0	13	50	38	0	0	0	2.8	3.1
2004	38	97	0	11	32	47	11	0	0	3.0	3.2
2005	29	91	0	3	17	55	24	0	0	3.5	3.2
2006	32	91	0	3	66	28	3	0	0	3.0	3.2
2007	28	97	0	7	32	25	36	0	0	3.5	3.2

Percent of students by VEL5 level

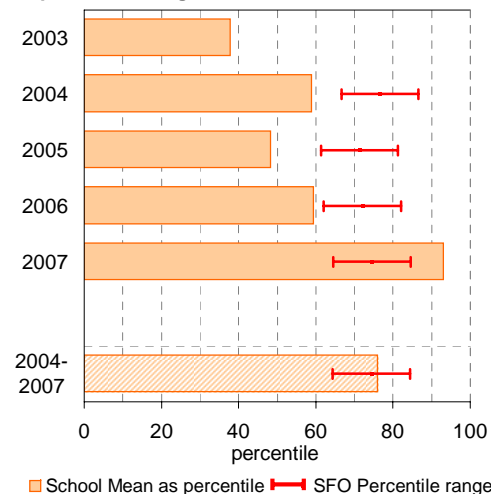


Year 3

School Mean against State Mean, including Participation

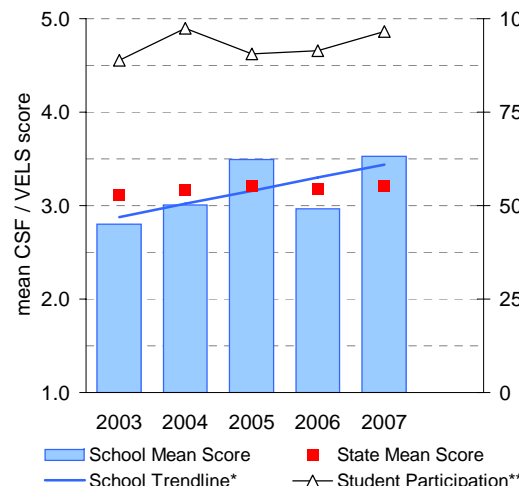


School Mean as percentile against SFO percentile range

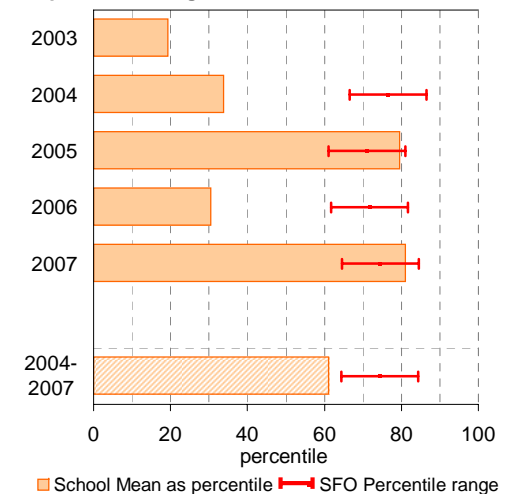


Year 5

School Mean against State Mean, including Participation



School Mean as percentile against SFO percentile range



Teacher Assessment of Student Progress (PSD students)

School no: 4935

School name: Watsonia Heights Primary School

Explanation: Teachers assess their students' progress against the 8 VELs Domains / CSF KLAs using a 6-point scale (students in special schools and those who cannot be assessed against the VELs / CSF).

Source of data: Data transmitted from school to DEECD via an online web-form.

	No progress (%)	Little progress (%)	Satisfactory progress (%)	Good progress (%)	Very good progress (%)	Excellent progress (%)	Total students assessed ¹ (no.)
--	--------------------	---------------------------	---------------------------------	-------------------------	------------------------------	------------------------------	--

2004 (by CSF KLA)

English
Mathematics
Science
Technology
The Arts
H&PE
SOSE

2005 (by CSF KLA)

English
Mathematics
Science
Technology
The Arts
H&PE
SOSE

2006 (by VELs Domain)

English
Mathematics
Science
ICT
The Arts
H&PE
Civics & Citizenship

2007 (by VELs Domain)

English
Mathematics
Science
ICT
The Arts
H&PE
Civics & Citizenship

2008 (by VELs Domain)

English
Mathematics
Science
ICT
The Arts
H&PE
Civics & Citizenship

2007 Primary state benchmarks (by VELs Domain)*

English	1	21	32	26	13	6
Mathematics	2	21	33	23	15	7
Science	4	19	47	18	8	4
ICT	1	17	43	17	14	8
The Arts	2	14	44	24	10	5
H&PE	2	15	37	26	15	5
Civics & Citizenship	3	24	34	22	12	5

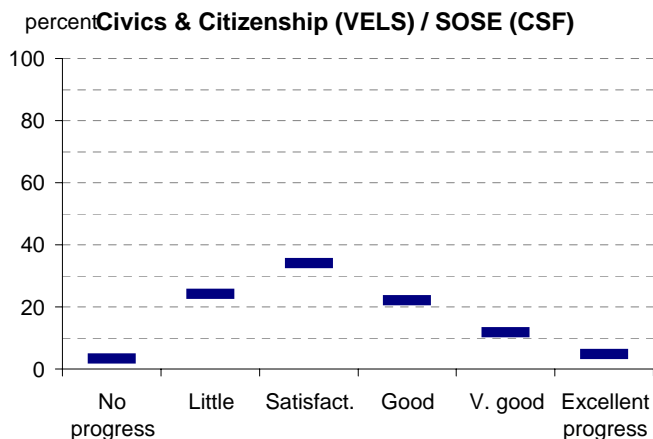
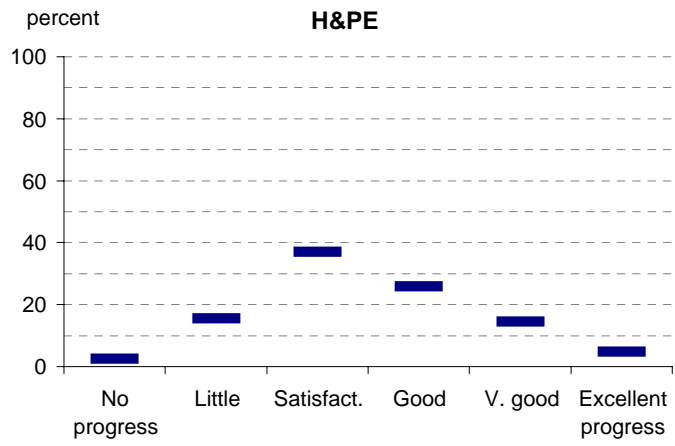
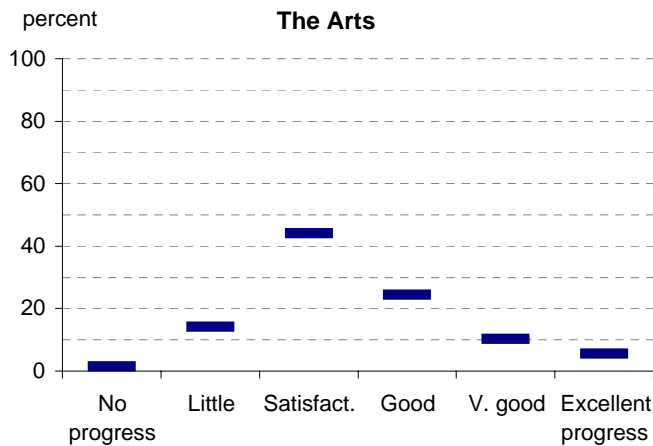
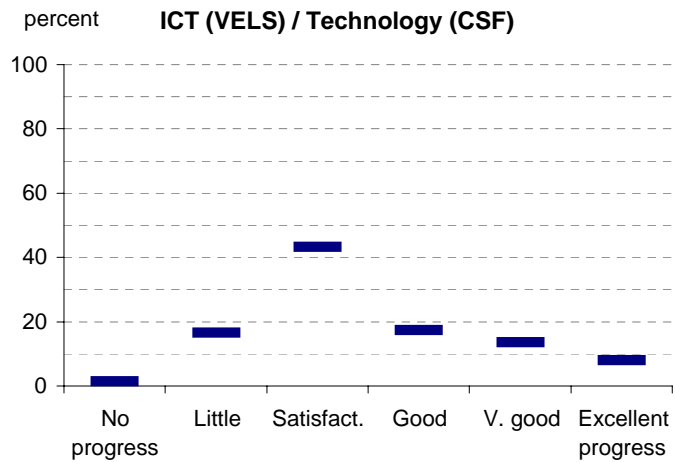
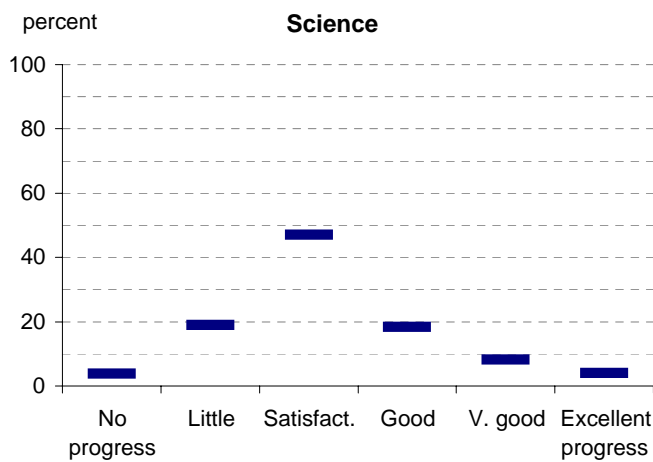
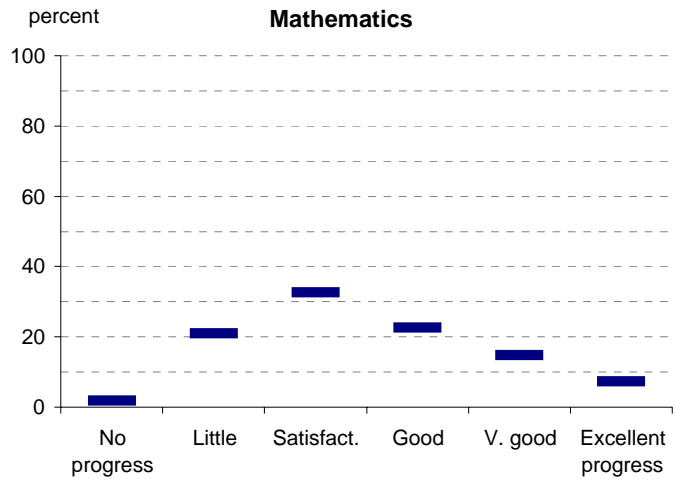
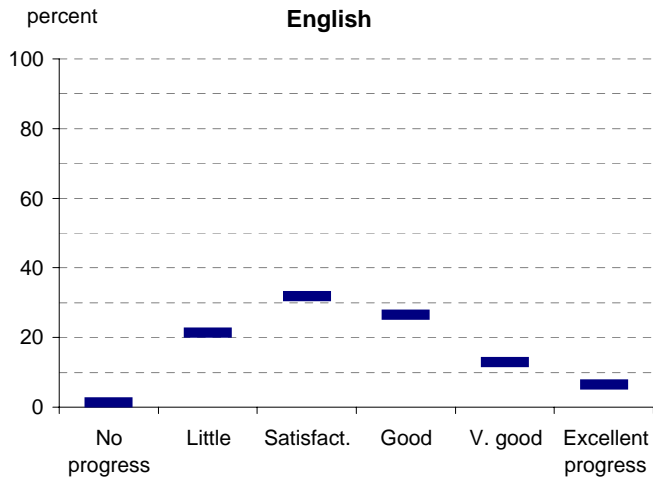
Notes: ¹ If schools provided percentages only, it is not possible to report the number of students assessed. In these cases, the total percentage (100) will be shown.

* 2008 benchmarks will be calculated in August, when data from all schools has been submitted.

Teacher Assessment of Student Progress (PSD students)

School no: 4935

School name: Watsonia Heights Primary School



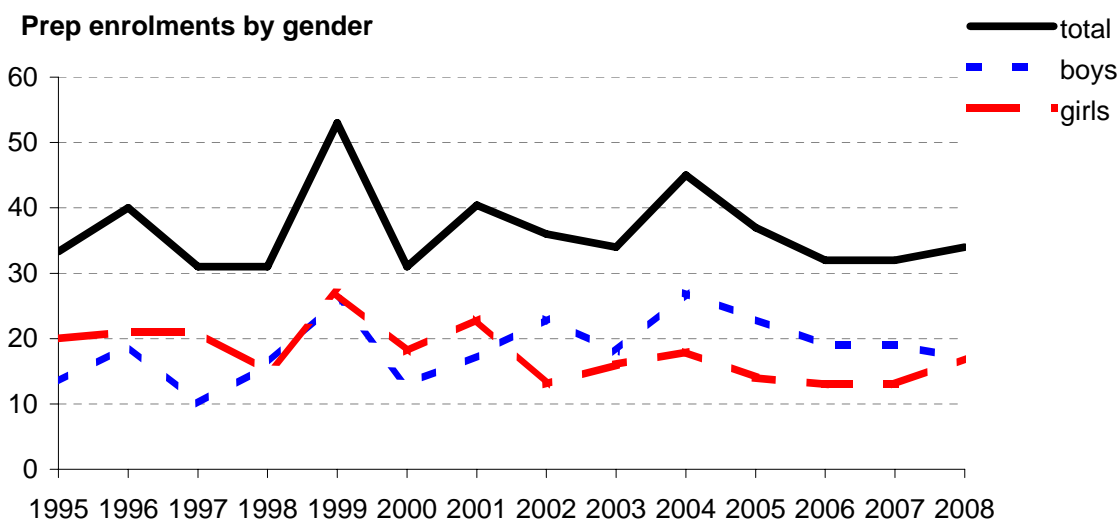
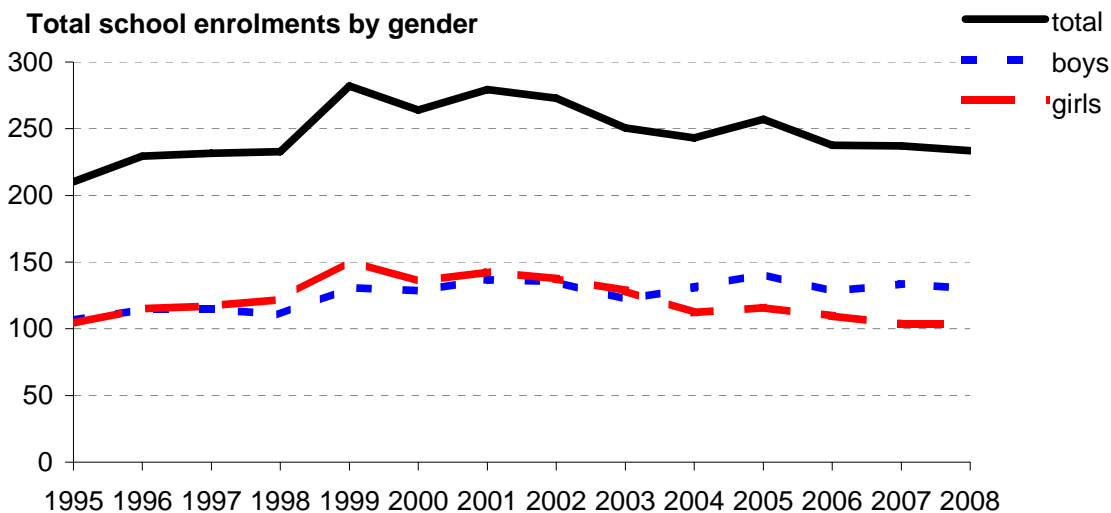
- 2004 (by CSF KLA)
- 2005 (by CSF KLA)
- 2006 (by VELS Domain)
- 2007 (by VELS Domain)
- 2008 (by VELS Domain)
- 2007 Primary state benchmarks (by VELS Domain)*

Notes: * 2008 benchmarks will be calculated in August, when data from all schools has been submitted.

Enrolments

School no: 4935
School name: Watsonia Heights Primary School
Explanation: Enrolments at February census.
Source of data: February census.

Year	Total school enrolment			Prep enrolment			Year 7 enrolments		
	boys	girls	total	boys	girls	total	boys	girls	total
1995	106	104	210	13	20	33			
1996	115	115	230	19	21	40			
1997	115	117	232	10	21	31			
1998	111	122	233	16	15	31			
1999	131	151	282	26	27	53			
2000	128	136	264	13	18	31			
2001	137	143	279	17	23	40			
2002	135	138	273	23	13	36			
2003	122	129	251	18	16	34			
2004	131	112	243	27	18	45			
2005	141	116	257	23	14	37			
2006	128	110	238	19	13	32			
2007	134	104	237	19	13	32			
2008	130	104	234	17	17	34			



Student Absence

School no: 4935

School name: Watsonia Heights Primary School

Source of data: Data retrieved electronically from CASES21.

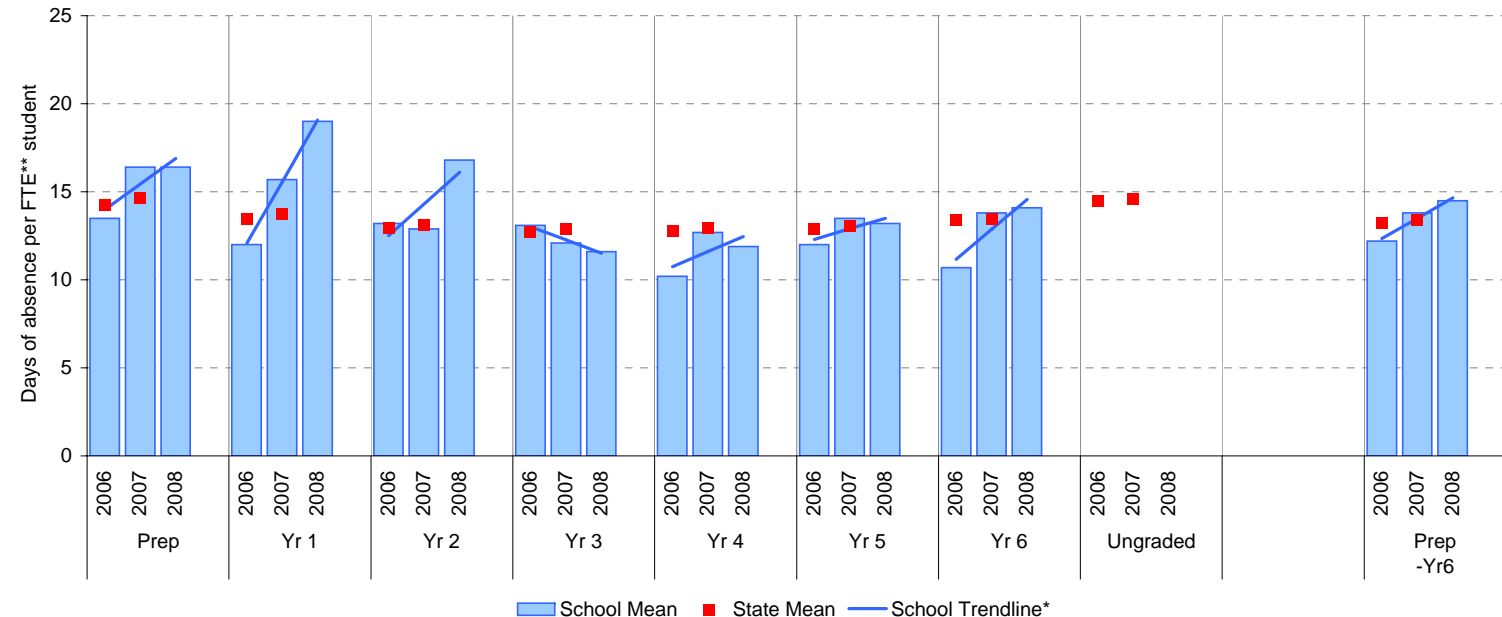
Explanation: The average (mean) number of absent days† per FTE** student.

Note that 20 absent days equates to 1 absent day per fortnight, and 10 absent days to 1 absent day per month.

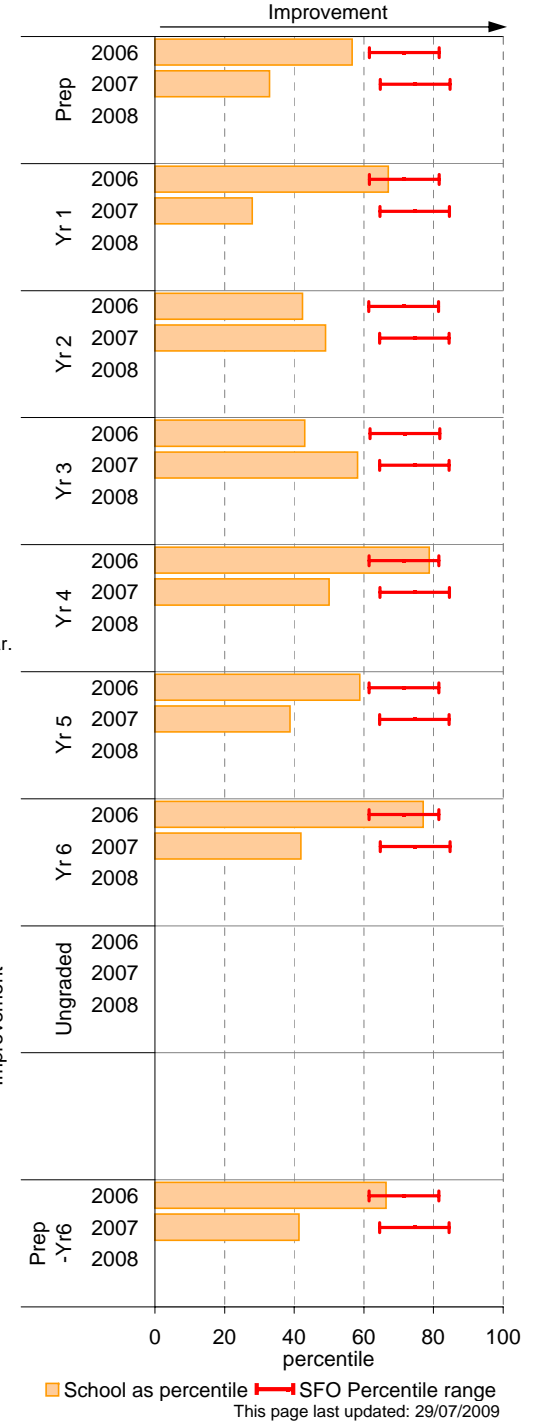
	School						2007 state benchmark^		
	2006		2007		2008		25th ptile	Mean	75th ptile
	Enrolments	Avg absent days / FTE** student	Enrolments	Avg absent days / FTE** student	Enrolments	Avg absent days / FTE** student			
Prep	31.5	13.5	31.1	16.4	33.8	16.4	12.0	14.6	17.7
Yr 1	35.5	12	32.5	15.7	26.5	19	11.5	13.8	16.1
Yr 2	39.5	13.2	37.8	12.9	31.1	16.8	11.0	13.1	15.1
Yr 3	35.9	13.1	42.0	12.1	34.2	11.6	10.8	12.9	14.9
Yr 4	29.0	10.2	35.1	12.7	40.2	11.9	10.8	12.9	15.0
Yr 5	33.2	12	29.0	13.5	33.1	13.2	10.6	13.1	15.0
Yr 6	30.4	10.7	32.4	13.8	26.7	14.1	11.0	13.4	15.7
Ungraded								14.6	
P-6 mean		12.2		13.8		14.5		13.4	

Notes: † Includes non-curriculum absences only (absence codes 200, 201, 202, 203, 205, 206, 207, 208, 209, 210, 211, 300, 401, 500, 700, 800, 804, 805, 900).
 * The school trendline is only plotted when there is data for each calendar year.
 ** FTE = Full Time Equivalent (including part-time and part-year fractions).
 ^ 2008 benchmarks and percentiles will be calculated in August, when data from all schools has been submitted.

School Mean against State Mean^



School Mean as percentile against SFO percentile range^



Parent Opinion

School no: 4935

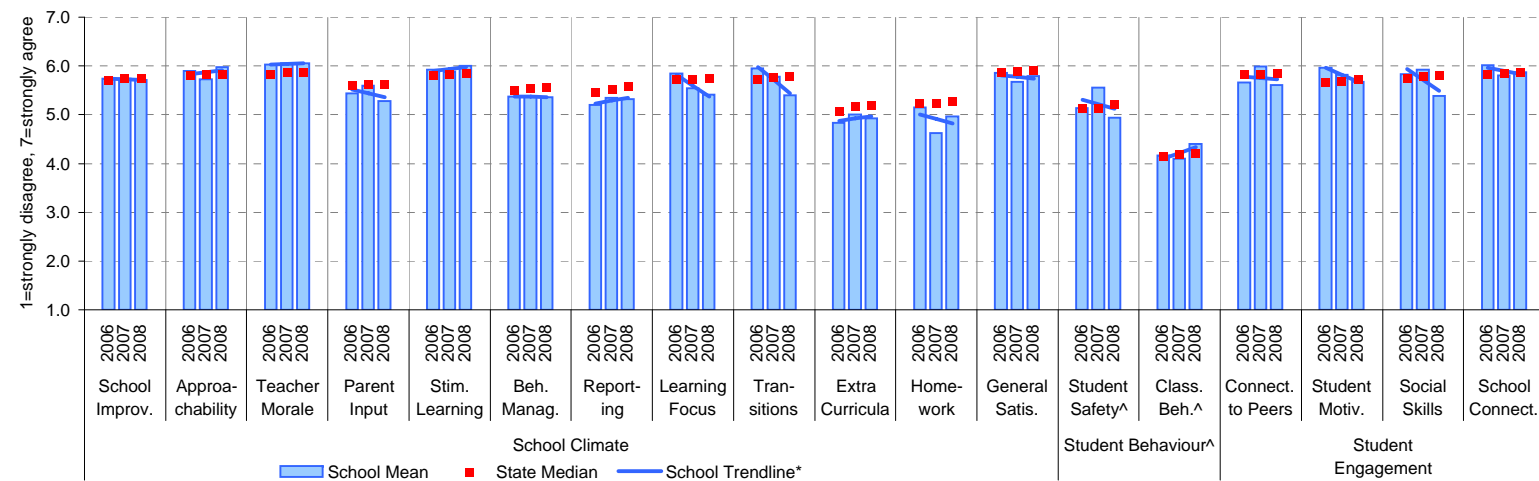
School name: Watsonia Heights Primary School

Explanation: A self-completion questionnaire to obtain parents' opinions of the school. Parents rated a number of statements using a scale where 1=strongly disagree & 7=strongly agree. The statements were grouped into the following categories.

Source of data: Data scanned from questionnaires completed by parents.

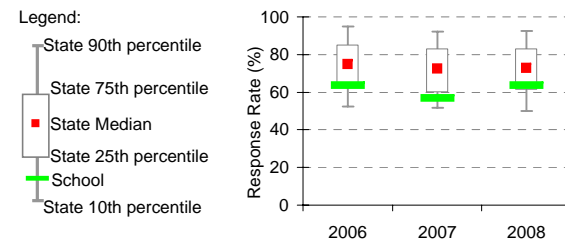
Variable No.	Name	Year	School mean	State Primary median
1	School Improvement	2006	5.74	5.71
		2007	5.73	5.75
		2008	5.71	5.74
2	Approachability	2006	5.90	5.81
		2007	5.73	5.82
		2008	5.97	5.83
3	Teacher Morale	2006	6.02	5.82
		2007	6.06	5.86
		2008	6.05	5.85
4	Parent Input	2006	5.44	5.59
		2007	5.60	5.62
		2008	5.28	5.62
5	Stimulating Learning	2006	5.92	5.81
		2007	5.88	5.84
		2008	6.00	5.84
6	Behaviour Management	2006	5.37	5.51
		2007	5.39	5.54
		2008	5.36	5.55
7	Reporting	2006	5.20	5.45
		2007	5.35	5.51
		2008	5.31	5.56
8	Learning Focus	2006	5.85	5.71
		2007	5.55	5.72
		2008	5.41	5.73
9	Transitions	2006	5.95	5.72
		2007	5.78	5.76
		2008	5.40	5.79
10	Extra Curricula	2006	4.84	5.07
		2007	5.00	5.17
		2008	4.93	5.19
11	Homework	2006	5.14	5.23
		2007	4.62	5.23
		2008	4.97	5.28
12	General Satisfaction	2006	5.85	5.87
		2007	5.68	5.88
		2008	5.79	5.91
13	Student Safety^	2006	5.13	5.13
		2007	5.56	5.12
		2008	4.94	5.20
14	Classroom Behaviour^	2006	4.16	4.15
		2007	4.10	4.18
		2008	4.40	4.20
15	Connectedness to Peers	2006	5.66	5.83
		2007	5.99	5.83
		2008	5.61	5.85
16	Student Motivation	2006	5.96	5.66
		2007	5.82	5.69
		2008	5.68	5.72
17	Social Skills	2006	5.83	5.76
		2007	5.92	5.78
		2008	5.39	5.81
18	School Connectedness	2006	6.02	5.83
		2007	5.80	5.85
		2008	5.88	5.86

School Mean against Primary State Mean



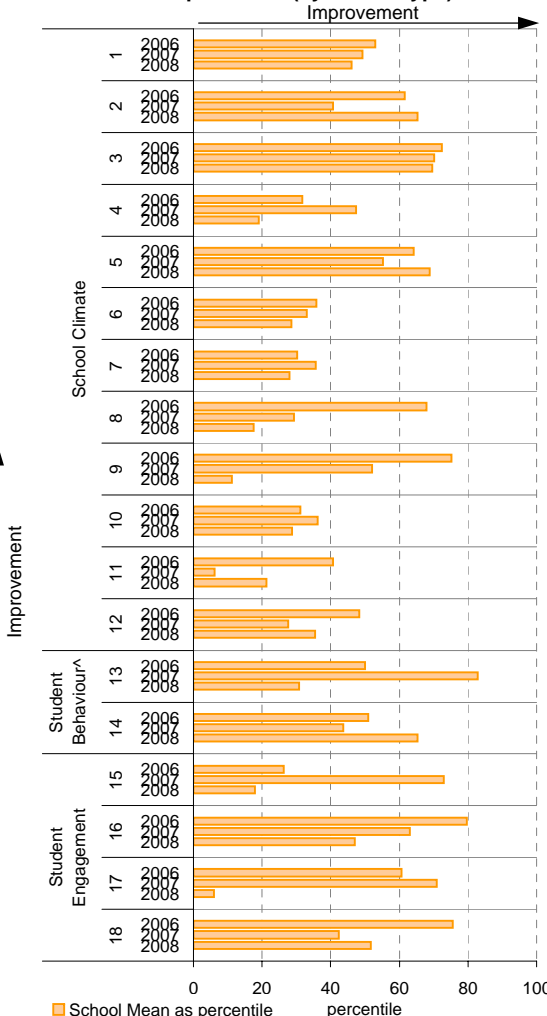
Notes: * The school trendline is plotted when there is data for each calendar year. ^^ Benchmarks available for Primary, Secondary, Pri/Sec, Special and SDS schools.
 ** If there were 6 or less respondents, table data is not shown for confidentiality reasons. If there were 3 or less respondents, graph data is not shown for confidentiality reasons.
 ^ Parents' responses to all negatively phrased questions have been reversed for reporting purposes. Across all variables, the higher the score or percentile rank, the more positive parents' perceptions.
 Produced by Data, Outcomes and Evaluation Division, DEECD

School response rate** against Primary school distribution



Year	No. of respondents	No. invited	Response Rate
2006	28	44	63.6%
2007	25	44	56.8%
2008	28	44	63.6%

School Mean as percentile (by school type)



This page last updated: 29/07/2009

Staff Opinion

School no: 4935

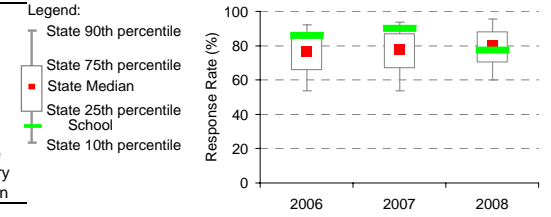
School name: Watsonia Heights Primary School

Explanation: A self-completion questionnaire to obtain the staff's opinions of the school. The survey was administered online using the School Organisational Health Questionnaire.

Source of data: Data transmitted from school staff to DEECD via an online survey application.

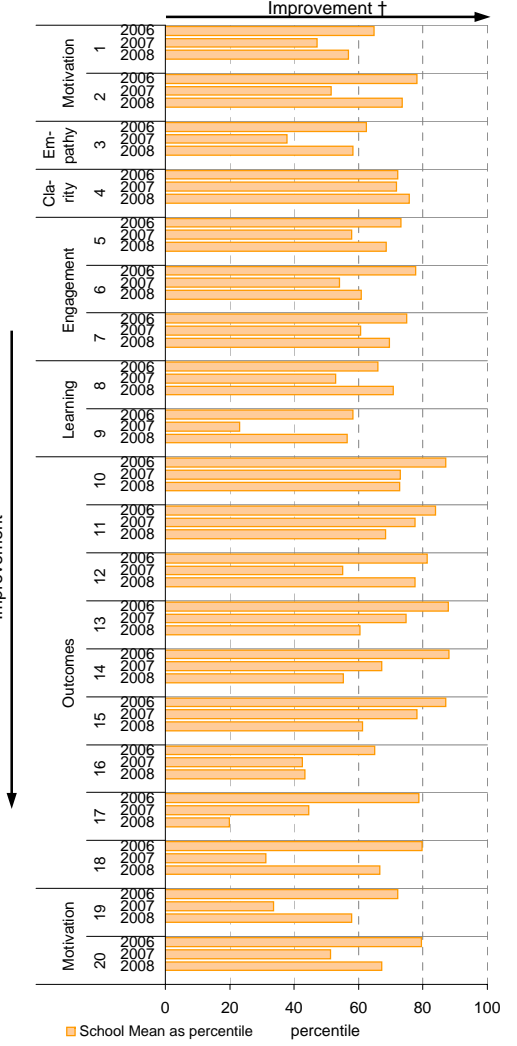
Variable	No.	Name	Year	School mean	State Primary median
1 Individual Morale	2006	78.5	75.6		
	2007	76.3	76.8		
	2008	79.4	78.1		
2 School Morale	2006	86.4	78.1		
	2007	80.0	79.2		
	2008	87.1	80.8		
3 Supportive Leadership	2006	83.6	80.0		
	2007	76.9	80.6		
	2008	85.0	82.2		
4 Role Clarity	2006	84.4	79.6		
	2007	84.7	80.1		
	2008	86.8	81.3		
5 Professional Interaction	2006	85.9	80.7		
	2007	83.5	81.9		
	2008	86.8	83.2		
6 Participative Decision-Making	2006	83.7	75.1		
	2007	77.4	76.3		
	2008	80.9	77.4		
7 Goal Congruence	2006	87.2	81.7		
	2007	85.0	82.6		
	2008	87.7	83.7		
8 Appraisal & Recognition	2006	76.4	71.6		
	2007	73.8	73.1		
	2008	80.4	75.0		
9 Professional Growth	2006	76.1	74.2		
	2007	68.1	76.0		
	2008	78.5	76.9		
10 Curriculum Coordination	2006	87.1	75.0		
	2007	82.6	75.6		
	2008	83.8	77.9		
11 Effective Discipline Policy	2006	90.4	79.9		
	2007	88.4	80.9		
	2008	87.1	82.0		
12 Student Orientation	2006	92.2	86.1		
	2007	87.5	86.6		
	2008	92.2	87.5		
13 Student Motivation	2006	87.7	76.8		
	2007	83.9	77.9		
	2008	82.3	79.5		
14 Student Decision-Making	2006	82.7	69.4		
	2007	76.4	71.3		
	2008	74.3	72.9		
15 Learning Environment	2006	90.8	81.3		
	2007	88.8	82.5		
	2008	86.3	84.1		
16 Student Misbehaviour	2006	16.1	21.7		
	2007	24.4	21.5		
	2008	22.2	20.0		
17 Classroom Misbehaviour	2006	9.6	13.8		
	2007	14.3	13.3		
	2008	18.2	12.6		
18 Excessive Work Demands	2006	30.6	42.9		
	2007	50.3	43.2		
	2008	35.3	41.7		
19 Individual Distress	2006	17.0	21.6		
	2007	24.3	21.1		
	2008	18.4	20.0		
20 School Distress	2006	17.8	28.8		
	2007	27.8	28.3		
	2008	20.6	26.7		

School response rate** against Primary school distribution

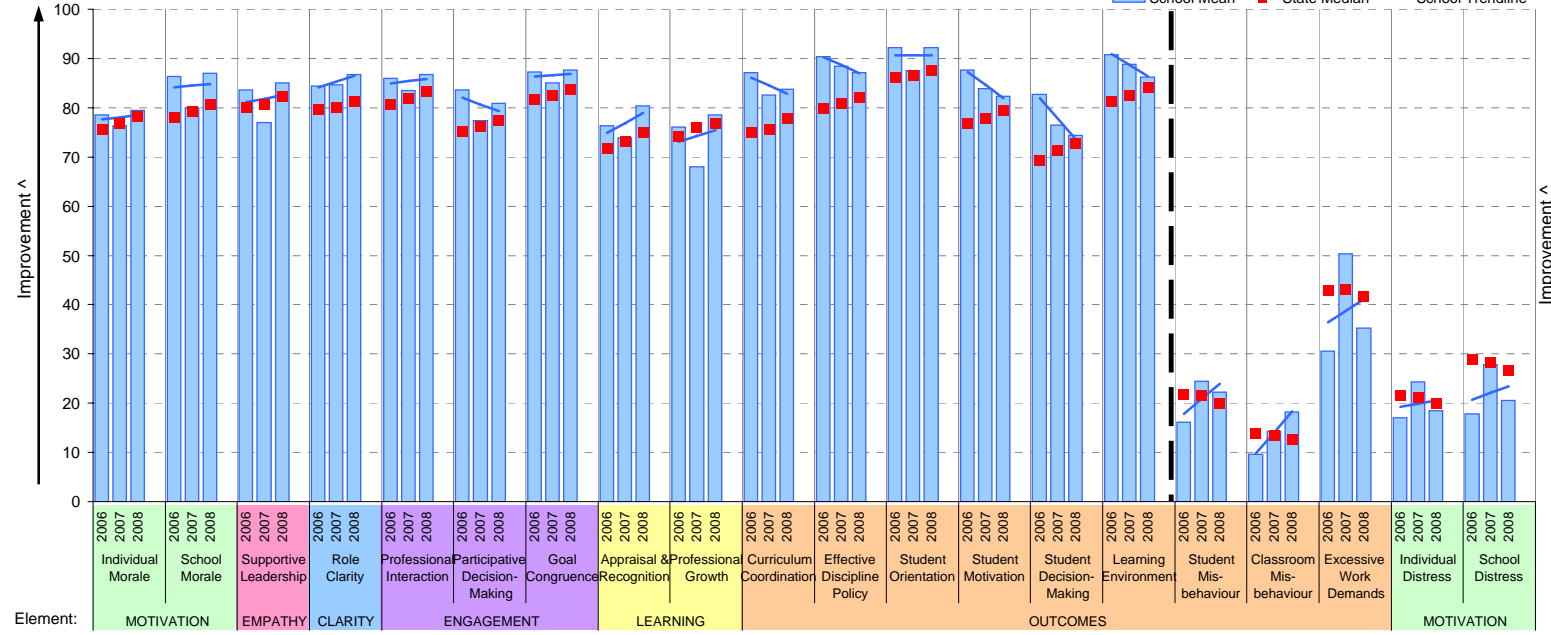


Year	No. of respondents	No. invited	Response Rate
2006	18	21	86%
2007	18	20	90%
2008	17	22	77%

School Mean as percentile (by school type)



School Mean against Primary State Median



Notes: * The school trendline is being trialled. It is only plotted when there is data for each calendar year.

** If there were 6 or less respondents, table data is not shown for confidentiality reasons. If there were 3 or less respondents, graph data is not shown for confidentiality reasons.

^ The higher the school mean, the more positive the outcome for variables 1 to 15. The lower the school mean, the more positive the outcome for variables 16 to 20.

† The higher the school percentile, the more positive the outcome for all variables.

^^ Benchmarks are available for Primary, Secondary, Pri/Sec, Special & SDS schools.

Performance & Development Culture (P&DC)^{††}

NEW

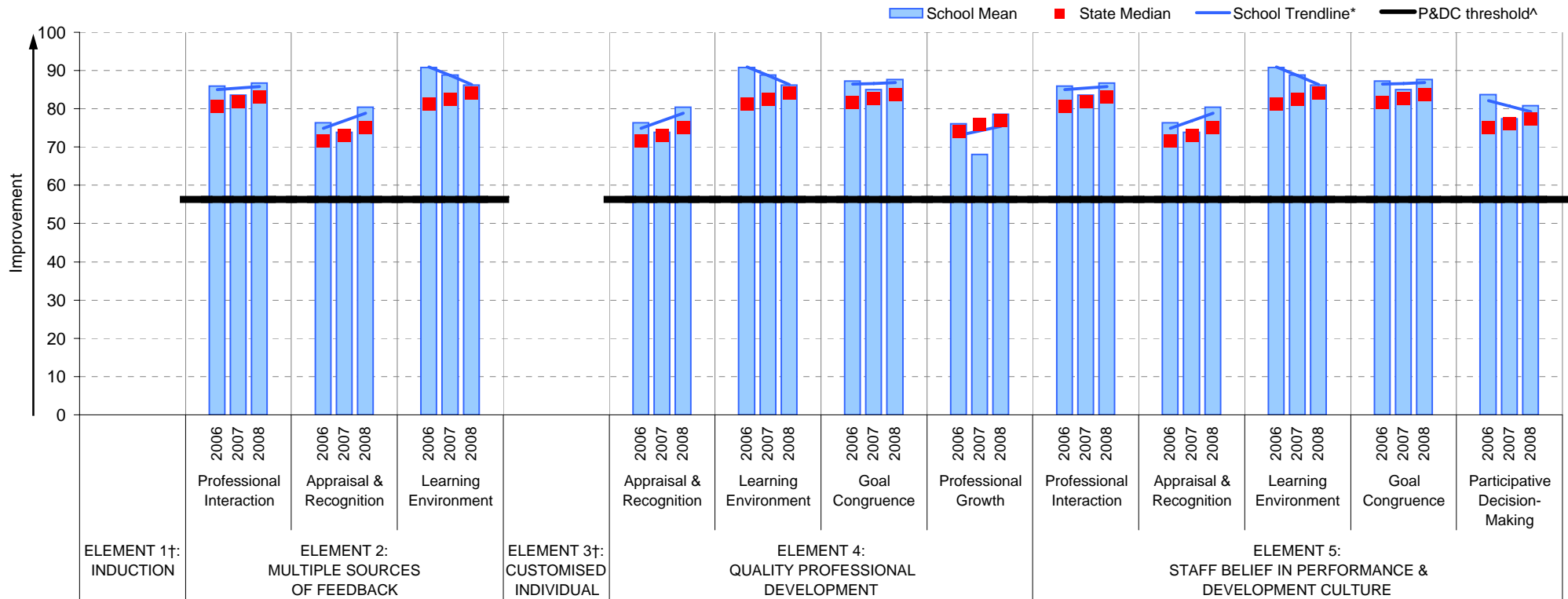
School no: 4935

School name: Watsonia Heights Primary School

Explanation: The data on this page refers to the Staff Opinion Survey.

Source of data: Data transmitted from school staff to DEECD via an online survey application.

School Mean against Primary State Median



Notes:

†† An assessment of the correlation between the P&DC Questionnaire and the Staff Opinion Survey was undertaken using data from Victorian Government schools that completed both surveys 2005 to 2007 (ie. 699 schools). This led to the identification of the components of the Staff Opinion Survey that could be used to assist schools with the ongoing monitoring of their performance and development culture. Refer to the P&DC website for further information: <http://www.education.vic.gov.au/management/schoolimprovement/panddc/default.htm>. For numerical r relating to the above graph, refer to the Staff Opinion Survey page in this report

† Note that there is no significant correlation between the Staff Opinion Survey and P&DC elements 1 (Induction) and 3 (Customised Individual Development Plan)

^ The P&DC threshold was derived from the P&DC Questionnaire 'percent favourable' methodology where a school is considered at the standard of accreditation when their Element score is : favourable (ie. at least 75% of staff selected the top two response categories in the P&DC Questionnaire)

* The school trendline is only plotted when there is data for each calendar year.

** If there were 3 or less respondents, graph data is not shown for confidentiality reasons

^^ Benchmarks are available for Primary, Secondary, Pri/Sec, Special & SDS schools

Staff Sick Leave

School no: 4935

School name: Watsonia Heights Primary School

Explanation: The number of non-certificated and total sick leave days taken per staff member. A detailed explanation on how staff sick leave is calculated is provided at: education.vic.gov.au/management/schoolimprovement/performance/performancefaq.htm.

Source of data: Human Resources Management System (HRMS)^.

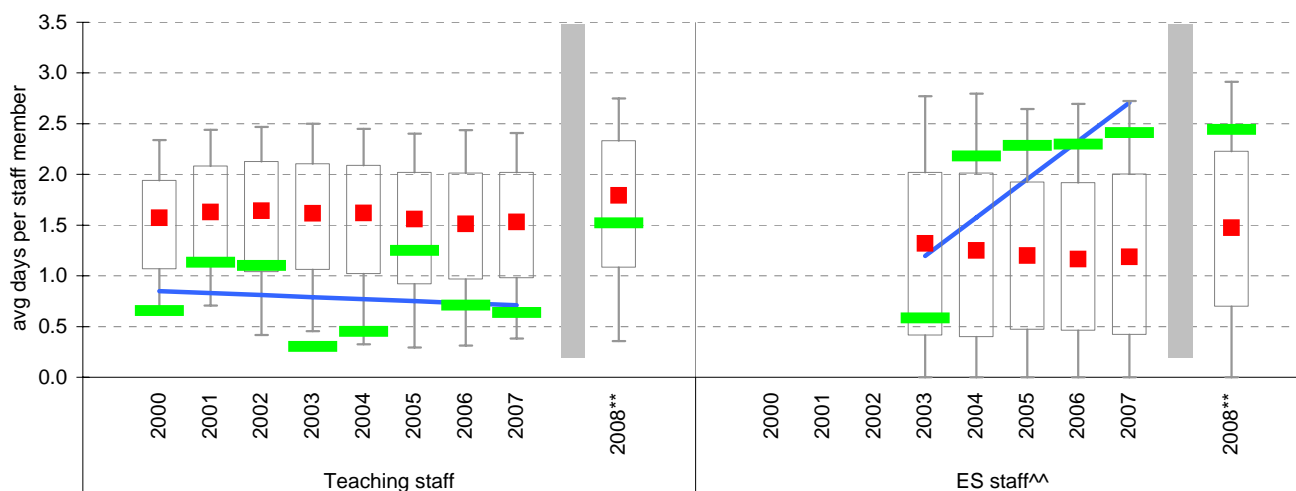
Non-Certificated sick leave days per staff member^

Staff Type	2000	2001	2002	2003	2004	2005	2006	2007	2008**	2008 State Median**
Teacher	0.66	1.13	1.10	0.30	0.45	1.25	0.71	0.64	1.52	1.79
ES^^					2.18	2.29	2.30	2.41	2.44	1.47

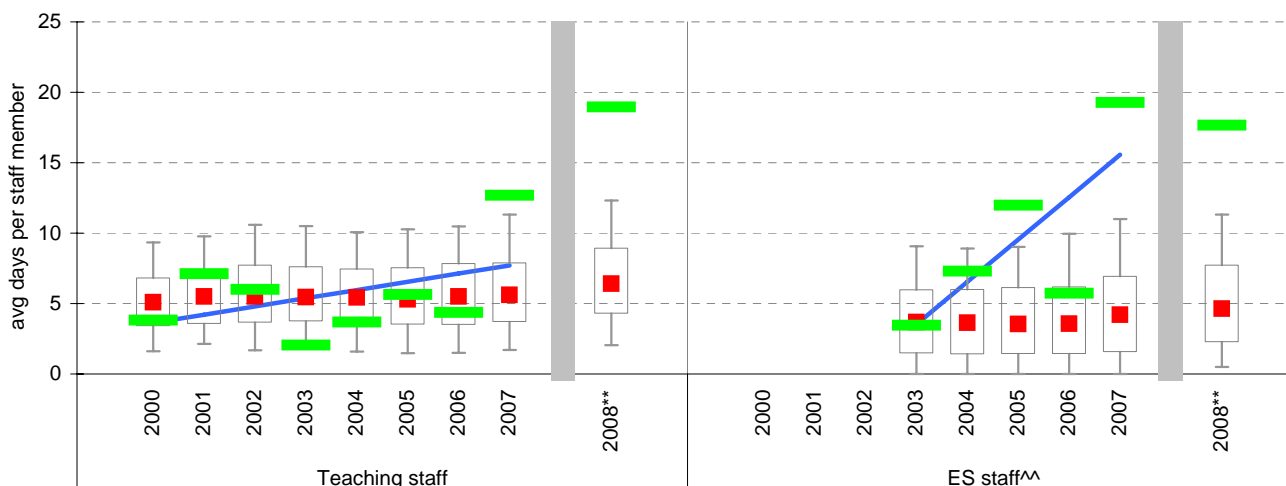
Total sick leave days per staff member^

Staff Type	2000	2001	2002	2003	2004	2005	2006	2007	2008**	2008 State Median**
Teacher	3.82	7.12	6.00	2.03	3.69	5.64	4.37	12.69	18.96	6.40
ES^^					7.30	11.98	5.73	19.27	17.66	4.63

NON-CERTIFICATED sick leave

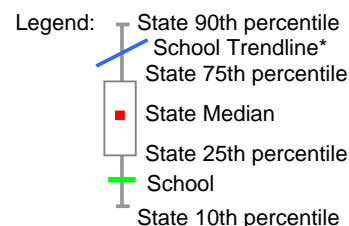


TOTAL sick leave



Notes:

- * The school trendline is only plotted when there is data for each calendar year.
- ** The way in which sick leave data are calculated changed in 2008. As such, data from 2008 cannot be compared with previous years.
- ^ There may be some discrepancy between the results from CASES21 and those from HRMS. The latter are considered to be more accurate.
- ^^ Data for ES (Education Support) staff is only available from 2003. In previous versions of this report, ES staff were known as SSO staff.



Teaching Staff Retention

School no: 4935

School name: Watsonia Heights Primary School

Explanation: The retention rate of teaching staff is determined by matching staff payroll records for the last pay in June of one year (Year A), to the last pay in June of the following year (Year B).

Source of data: Human Resources Management System (HRMS).

Teaching Staff*

Year A	Year B	Number of Teaching Staff in Year A	Number of Teaching Staff retained in Year B	Teaching Staff Retention Rate	Statewide Average
2005	2006	16	15	94%	87%
2006	2007	16	13	81%	86%
2007	2008	15	14	93%	84%

Of the 16 teaching service staff at June 2005 (including those on leave without pay), 15 or 94% were still at the school at June 2006. This figure across all Government schools was 87%.

Of the 16 teaching service staff at June 2006 (including those on leave without pay), 13 or 81% were still at the school at June 2007. This figure across all Government schools was 86%.

Of the 15 teaching service staff at June 2007 (including those on leave without pay), 14 or 93% were still at the school at June 2008. This figure across all Government schools was 84%.

Ongoing Teaching Staff*^

Year A	Year B	Number of Ongoing Teaching Staff in Year A	Number of Ongoing Teaching Staff retained in Year B	Ongoing Teaching Staff Retention Rate	Statewide Average
2005	2006	16	15	94%	91%
2006	2007	16	13	81%	90%
2007	2008	14	13	93%	88%

Of the 16 ongoing teaching service staff at June 2005 (including those on leave without pay), 15 or 94% were still at the school at June 2006. This figure across all Government schools was 91%.

Of the 16 ongoing teaching service staff at June 2006 (including those on leave without pay), 13 or 81% were still at the school at June 2007. This figure across all Government schools was 90%.

Of the 14 ongoing teaching service staff at June 2007 (including those on leave without pay), 13 or 93% were still at the school at June 2008. This figure across all Government schools was 88%.

Notes: * Teaching staff includes Principal class, Teacher class and Instructor class. Teaching staff employed as visiting teachers, guidance officers, curriculum consultants, etc. are excluded as they are not charged to a particular school.

^ Not including fixed term staff, except for where staff had changed from ongoing in Year A to fixed term in Year B.

Bank Balances

School no: 4935

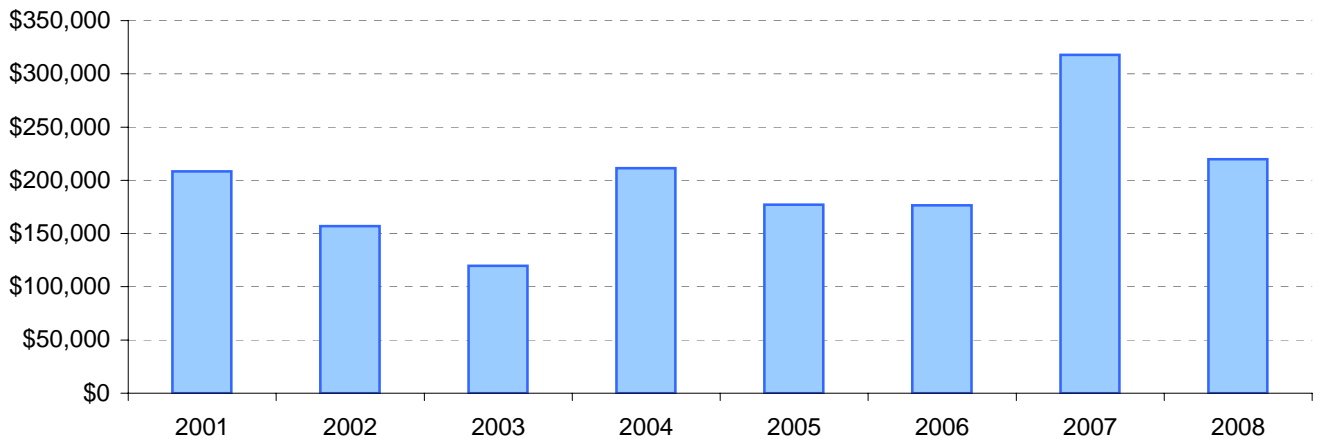
School name: Watsonia Heights Primary School

Explanation: Account balance figures include official and investment accounts, and are calculated by taking the opening balance at 1st January plus the total receipts at 31st December less total payments at 31st December.

Account Balances (Official plus Investment Accounts)

2001	\$208,431	2005	\$177,069
2002	\$156,885	2006	\$176,485
2003	\$119,726	2007	\$317,744
2004	\$211,434	2008	\$219,855

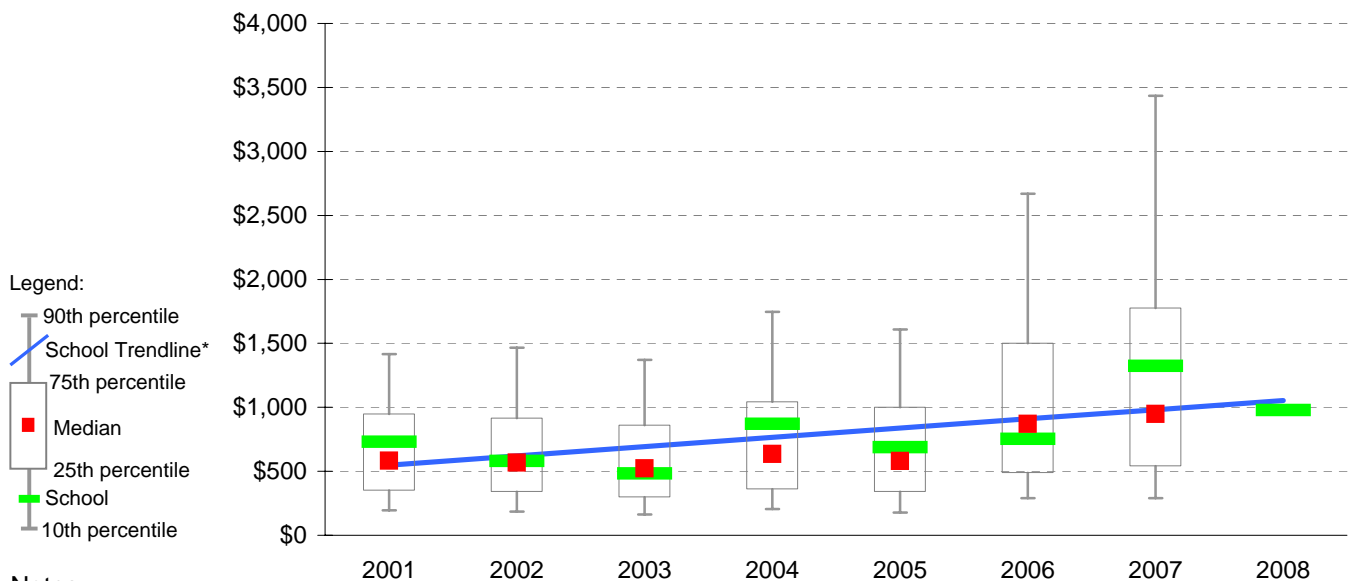
Account Balances



Account Balances (Official plus Investment Accounts) per student[†]

2001	\$731	2005	\$689
2002	\$579	2006	\$752
2003	\$484	2007	\$1,323
2004	\$870	2008	\$979

School account balances per student enrolled in August census plotted on state Primary benchmarks[^]



Notes:

* The school trendline is being trialled. It is only plotted when there is data for each calendar year.

† The account balance per student has been calculated to enable some comparison to be made between schools.

^ Benchmarks for primary, secondary, pri/sec, SDS, special and language schools.